

SUMMARY OF SUB-BASEMENT ABATEMENT / REMOVALS	
MATERIAL	APPROXIMATE QUANTITY*
REGULATORY ASBESTOS CONTAINING MATERIALS	
DEBRIS	10,800 CU FT
METAL FIRE DOORS IN HALLWAYS AND BUILDING EXITS	FIELD VERIFY
LEAD BASED PAINT/PLASTER	
CEILING BEAM	175 SQ FT
SUSPECT PCB-CONTAINING EQUIPMENT	
NOT OBSERVED	
UNIVERSAL WASTE	
NOT OBSERVED	
REFRIGERANT-CONTAINING EQUIPMENT	
NOT OBSERVED	
CHEMICAL AND PETROLIUM PRODUCTS	
NOT OBSERVED	
MISCELLANEOUS ITEMS, SUPPLIES AND EQUIPMENT	
NOT OBSERVED	
SOIL	
MOLD	FIELD VERIFY
GLASS	
NOT OBSERVED	

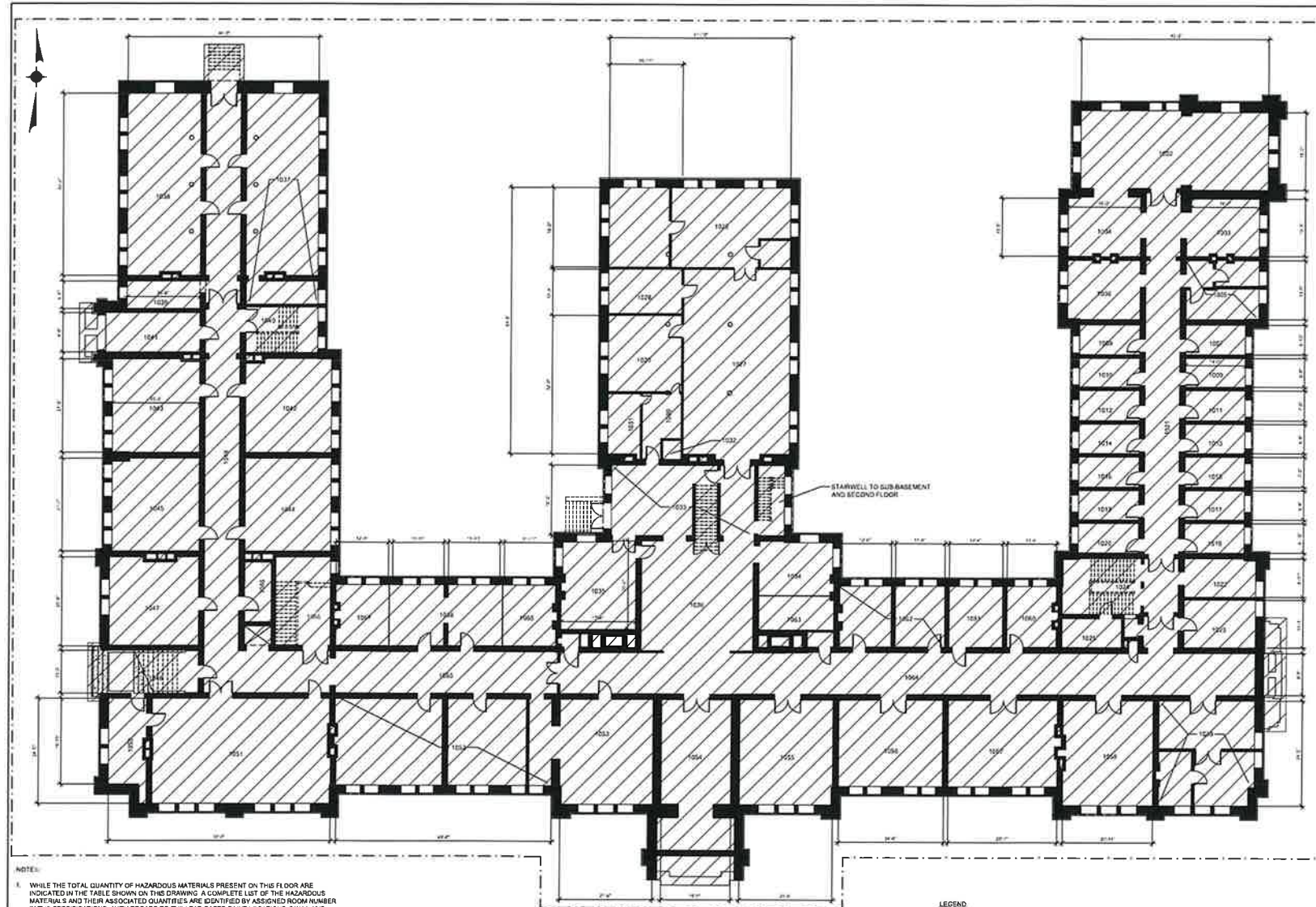
\* QUANTITIES ARE ESTIMATES AND SHALL BE VERIFIED BY THE CONTRACTOR PRIOR TO BIDDING ON ABATEMENT. SEE NOTE 3 THIS SHEET.  
 CU FT = CUBIC FEET, SQ FT = SQUARE FEET, LN FT = LINEAR FEET

NOTES  
 1. WHILE THE TOTAL QUANTITY OF HAZARDOUS MATERIALS PRESENT ON THIS FLOOR ARE INDICATED IN THE TABLE SHOWN ON THIS DRAWING, A COMPLETE LIST OF THE HAZARDOUS MATERIALS AND THEIR ASSOCIATED QUANTITIES ARE IDENTIFIED BY ASSIGNED ROOM NUMBER IN THE SPECIFICATIONS. WITH REGARD TO THE LEAD-BASED PAINT LOCATIONS, "WALL A" IS THE NORTH WALL, "WALL B" IS THE EAST WALL, "WALL C" IS THE SOUTH WALL AND "WALL D" IS THE WEST WALL.  
 2. REFER TO ABATEMENT NOTES ON SHEET 01.



90% DESIGN SUBMITTAL

SOURCE: INCORPORATED VILLAGE OF GARDEN CITY		UNAUTHORIZED ALTERATION OR ADDITION TO THIS DOCUMENT IS A VIOLATION OF SECTION 7209 OF THE NEW YORK STATE EDUCATION LAW			INCORPORATED VILLAGE OF GARDEN CITY		PROJECT NO: 5902 DATE: NOVEMBER 2024 SCALE: 3/32"=1'-0"	<b>HM1</b>
NO.	DATE	REVISION	BY		PROJECT ENGINEER: MH DESIGNED BY: BV	DRAWN BY: ZK CHECKED BY: BV		



NOTES:  
 1. WHILE THE TOTAL QUANTITY OF HAZARDOUS MATERIALS PRESENT ON THIS FLOOR ARE INDICATED IN THE TABLE SHOWN ON THIS DRAWING, A COMPLETE LIST OF THE HAZARDOUS MATERIALS AND THEIR ASSOCIATED QUANTITIES ARE IDENTIFIED BY ASSIGNED ROOM NUMBER IN THE SPECIFICATIONS. WITH REGARD TO THE LEAD-BASED PAINT LOCATIONS, "WALL A" IS THE NORTH WALL, "WALL B" IS THE EAST WALL, "WALL C" IS THE SOUTH WALL AND "WALL D" IS THE WEST WALL.  
 2. REFER TO ABATEMENT NOTES ON SHEET 01.

SOURCE: INCORPORATED VILLAGE OF GARDEN CITY

NO.	DATE	REVISION	BY

UNAUTHORIZED ALTERATION OR ADDITION TO THIS DOCUMENT IS A VIOLATION OF SECTION 7209 OF THE NEW YORK STATE EDUCATION LAW.

PROJECT ENGINEER: MH  
 DESIGNER: BV  
 CHECKED BY: ZK  
 CHECKED BY: BV



INCORPORATED VILLAGE OF GARDEN CITY  
 MASSACHUSETTS  
 ST. PAUL'S SCHOOL BUILDING  
 HAZARDOUS MATERIALS ABATEMENT

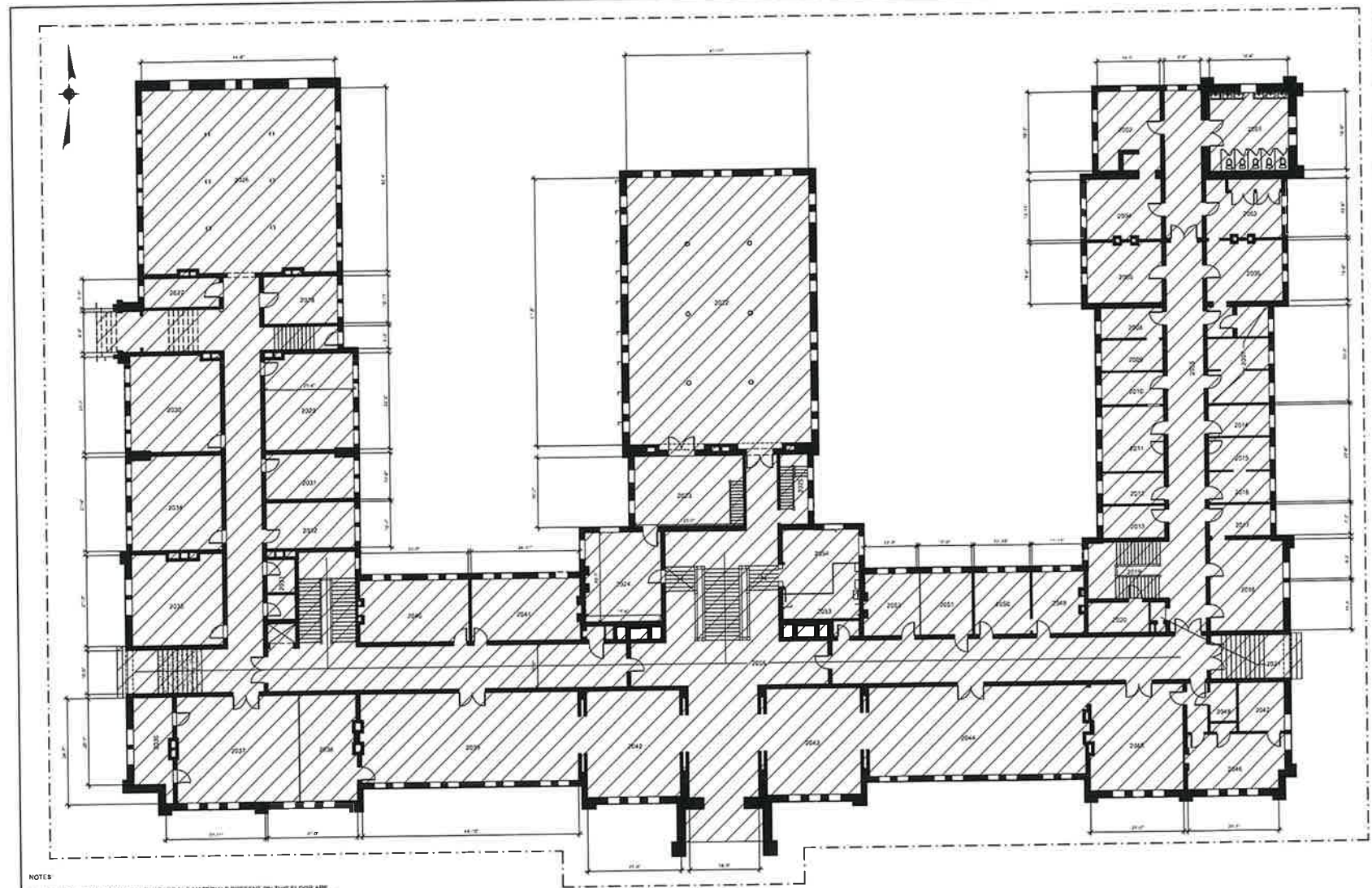
90% DESIGN SUBMITTAL

BASEMENT FLOOR PLAN

MATERIAL	APPROXIMATE QUANTITY*
<b>REGULATED ASBESTOS-CONTAINING MATERIALS</b>	
6" X 9" TAN FLOOR TILE	6,705 SQ. FT.
WOOD TRANSITE BOARD	5 SQ. FT.
2" X 2" "PERFORATED" CEILING TILE (TRANSITE)	889 SQ. FT.
WHITE AIR CELL PPF WRAP	1,744 LN. FT.
R/W JOINT CEMENT TO WHITE AIR CELL PPF WRAP	407 EACH
1" X 1" WHITE FLOOR TILE	288 SQ. FT.
TRANSITE ELECTRIC PANEL	80 SQ. FT.
1" X 1" WHITE W/BROWN STREAKS FLOOR TILE	960 SQ. FT.
MARBLE TO 1" X 1" WHITE W/BROWN STREAKS FLOOR TILE	960 SQ. FT.
6" X 9" BROWN W/DORANGE STREAKS FLOOR TILE	594 SQ. FT.
STAINED TRANSITE PANELS	36 SQ. FT.
WINDOW CAULK (EXT/WDR)	250 SQ. FT.
METAL FIRE DOORS IN HALLWAYS AND BUILDING EXITS	FIELD VERIFY
<b>LEAD-BASED PAINT/COATING</b>	
CEILING BEAM	123 SQ. FT.
WINDOW CASINGS	1,300 SQ. FT.
PIRES	575 SQ. FT.
DOOR CASINGS	380 SQ. FT.
DOORS	645 SQ. FT.
WALL	500 SQ. FT.
COLUMNS	135 SQ. FT.
CABINETS	175 SQ. FT.
CEILING	1,532 SQ. FT.
WINDOW APRON	20 SQ. FT.
WINDOW SASHES	69 SQ. FT.
WINDOW FRAMES	80 SQ. FT.
STRUCTURAL STEEL UNDER STAIRS	30 SQ. FT.
UPPER WALL	460 SQ. FT.
LOWER WALL	460 SQ. FT.
WALL SHELVING	90 SQ. FT.
STRUCTURAL STEEL	40 SQ. FT.
<b>SUSPECT PCB-CONTAINING EQUIPMENT</b>	
LIGHT BALLASTS	183
<b>UNIVERSAL WASTE</b>	
FLUORESCENT LAMPS	19 COMPACT FLOURESCENT LAMPS 218 FOUR-FOOT LAMPS 81 EIGHT-FOOT LAMPS 24 FOUR-FOOT U-TUBE LAMPS
METAL HALLOW LAMP	1
EMERGENCY LIGHT BATTERIES	8
EXIT SIGN BATTERIES	1
SEALED LEAD ACID BATTERIES	10
<b>REFRIGERANT-CONTAINING EQUIPMENT</b>	
WALK IN REFRIGERATORS / FREEZERS	2
<b>CHEMICAL AND PETROLEUM PRODUCTS</b>	
1 GALLON BATHROOM DISINFECTANT	1
1 GALLON HAND SOAP	1
1 QUART AMMONIA	1
1 QUART BLEACH	1
1 GALLON AMMONIA	1
3 GALLON OVEN GRILL CLEANER	1
HALON SYSTEM	1
1 GALLON PAINT CANS	4
12 OZ. PIPE THREAD CLEANER	1
1/2 OZ. PIPE DOP	1
1 GALLON FURNACE CEMENT	1
2 PINT COMPOUND	1
1 GALLON STERILITE ONE STEP SPRAY POWDER	1
SILVER KILN	1
<b>MISCELLANEOUS ITEMS, MATERIALS AND EQUIPMENT</b>	
SMOKE DETECTORS	53
MOLD	FIELD VERIFY
GUANO	FIELD VERIFY
NOT OBSERVED	

\* QUANTITIES ARE ESTIMATED AND SHALL BE VERIFIED BY THE CONTRACTOR PRIOR TO BEGINNING OF ABATEMENT. SEE NOTE 1 THIS SHEET.  
 CU. FT. = CUBIC FEET, SQ. FT. = SQUARE FEET, LN. FT. = LINEAR FEET

PROJECT NO. 5030  
 DATE: NOVEMBER 2024  
 SCALE: 3/32"=1'-0"  
**HM2**



SUMMARY OF FIRST FLOOR ABATEMENT / REMOVALS	
MATERIAL	APPROXIMATE QUANTITY*
REGULATED ASBESTOS CONTAINING MATERIAL	
2" X 2" SMOOTH CEILING TILE (TRANSITE)	324 SQ. FT.
6" X 6" TAN FLOOR TILE	2,384 SQ. FT.
WALL/CEILING PLASTER - BROWN COAT	66,653 SQ. FT.
6" X 6" GREY FLOOR TILE	350 SQ. FT.
MASTIC TO 6" X 6" GREY FLOOR TILE	350 SQ. FT.
DRYWALL JOINT COMPOUND	370 SQ. FT.
1" X 1" TAN W/REUSE STRIPES FLOOR TILE	2,700 SQ. FT.
6" X 6" BROWN FLOOR TILE	2,310 SQ. FT.
METAL FIRE DOORS IN HALLWAYS AND BUILDING EXITS	FIELD VERIFY
LEAD BASED PAINT/COATINGS	
PAINT	25 SQ. FT.
WALLS	12,350 SQ. FT.
WINDOW CASINGS	90 SQ. FT.
WINDOW SHUTTER FRAME	25 SQ. FT.
WALL AND COLUMN	180 SQ. FT.
DOOR CASINGS	40 SQ. FT.
LOWER WALLS	600 SQ. FT.
UPPER WALLS	545 SQ. FT.
SUSPECT PCB CONTAINING EQUIPMENT	
LIGHT BALLASTS	197
UNIVERSAL WASTE	
FLUORESCENT LAMPS	3 (COMPACT) FLUORESCENT LAMPS 2 ONE-FOOT LAMPS 304 FOUR-FOOT LAMPS 18 EIGHT-FOOT LAMPS
EMERGENCY LIGHT BATTERIES	
REFRIGERANT-CONTAINING EQUIPMENT	
HYVAC SPLIT UNIT	
WATER FOUNTAIN	
CHEMICAL AND PE PROBLEM PRODUCTS	
1-GALLON ZEP CLEANER	
FIRE EXTINGUISHERS	
MISCELLANEOUS HAZARDOUS MATERIALS AND EQUIPMENT	
SMOKE DETECTORS	
MOLD	MOLD
MOLD	FIELD VERIFY
NOT OBSERVED	
MOLD	
MOLD	

\* QUANTITIES ARE ESTIMATED AND SHALL BE VERIFIED BY THE CONTRACTOR PRIOR TO BIDDING OR ABATEMENT. SEE NOTE 1 THIS SHEET.  
 CU. FT. = CUBIC FEET, SQ. FT. = SQUARE FEET,  
 LN. FT. = LINEAR FEET.

NOTES  
 1. WHILE THE TOTAL QUANTITY OF HAZARDOUS MATERIALS PRESENT ON THIS FLOOR ARE INDICATED IN THE TABLE SHOWN ON THIS DRAWING, A COMPLETE LIST OF THE HAZARDOUS MATERIALS AND THEIR ASSOCIATED QUANTITIES ARE IDENTIFIED BY ASSIGNING ROOM NUMBER IN THE SPECIFICATIONS. WITH REGARD TO THE LEAD-BASED PAINT LOCATIONS, "WALL A" IS THE NORTH WALL, "WALL B" IS THE EAST WALL, "WALL C" IS THE SOUTH WALL AND "WALL D" IS THE WEST WALL.  
 2. REFER TO ABATEMENT NOTES ON SHEET 01.



90% DESIGN SUBMITTAL

SOURCE: INCORPORATED VILLAGE OF GARDEN CITY		
NO.	DATE	REVISION

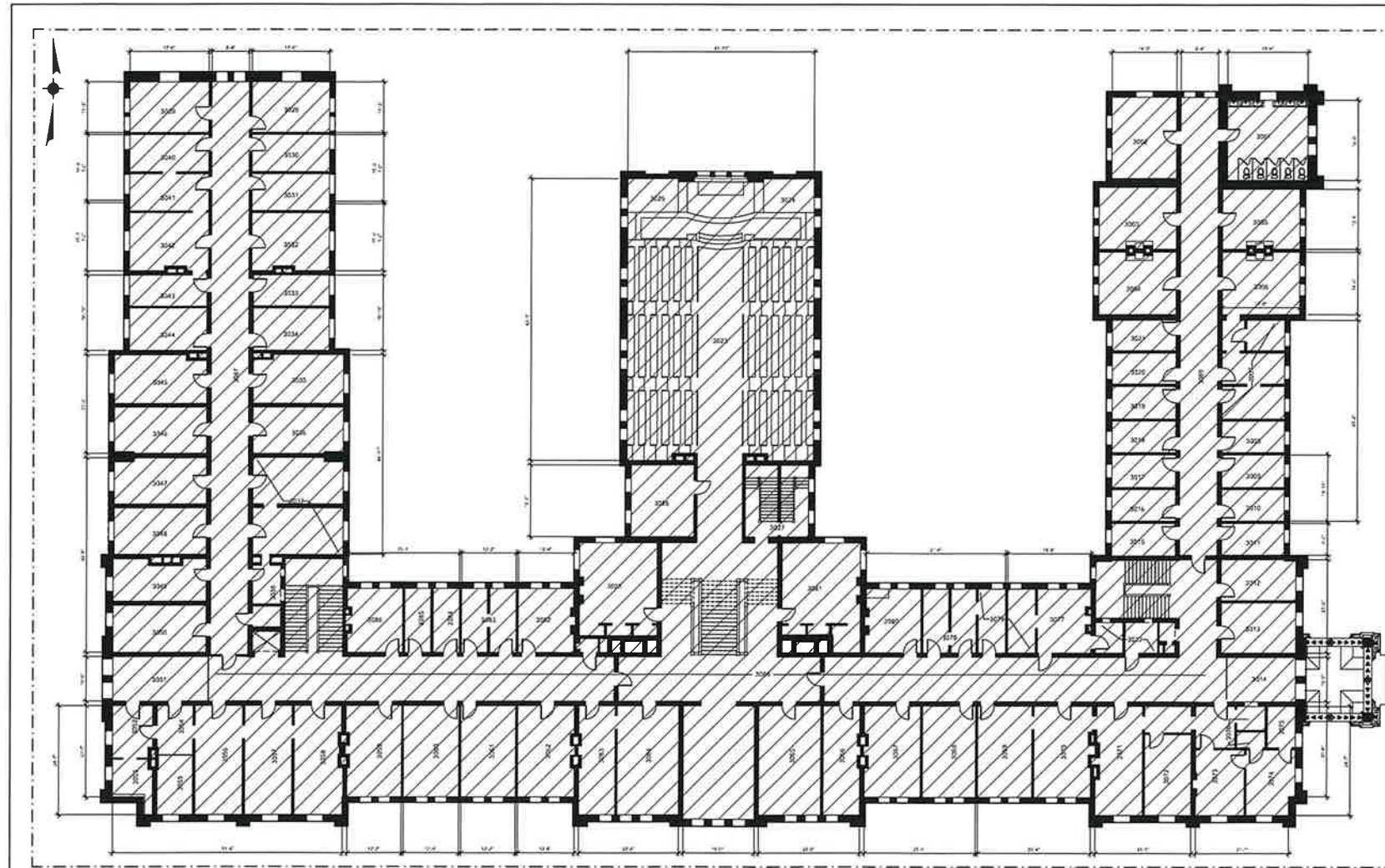
UNAUTHORIZED ALTERATION OR ADDITION TO THIS DOCUMENT IS A VIOLATION OF SECTION 1609 OF THE NEW YORK STATE EDUCATION LAW	
PROJECT MANAGER	DRAWN BY
NH	ZK
DESIGNED BY	CHECKED BY
BV	BV



INCORPORATED VILLAGE OF GARDEN CITY  
 NASSAU COUNTY NEW YORK  
 ST. PAUL'S SCHOOL BUILDING  
 HAZARDOUS MATERIALS ABATEMENT

FIRST FLOOR PLAN

PROJECT NO.	1907	DRAWING NO.	HM3
DATE	NOVEMBER 2024	SCALE	3/32"=1'-0"



SUMMARY OF SECOND FLOOR ABATEMENT / REMOVALS	
MATERIAL	APPROXIMATE QUANTITY *
<b>REGULATED ASBESTOS-CONTAINING MATERIAL</b>	
1/2" X 3/8" SMOOTH CEILING TILE (FRANKITE)	1,158 SQ. FT.
1/2" X 1" WHITE W/BROWN STREAKS FLOOR TILE	350 SQ. FT.
MASTIC & 1/2" WHITE W/BROWN STREAKS FLOOR TILE	350 SQ. FT.
DRYWALL JOINT COMPOUND	649 SQ. FT.
ORGANIC INSULATION BOARD	220 SQ. FT.
1/2" X 1/2" BROWN FLOOR TILE	137 SQ. FT.
1/2" X 1" TAN W/BROWN STREAKS FLOOR TILE	596 SQ. FT.
1/2" X 3/8" BROWN FLOOR TILE (UNDER SELF STICK)	280 SQ. FT.
METAL FIRE DOORS IN HALLWAYS AND BUILDING EXITS	FIELD VERIFY
<b>LEAD-BASED PAINT/COATING</b>	
WALLS	6,510 SQ. FT.
CEILING	2,475 SQ. FT.
EXIT DOOR	65 SQ. FT.
EXIT DOOR FRAME	40 SQ. FT.
EXIT DOOR CASING	40 SQ. FT.
SUSPECT PCB-CONTAINING EQUIPMENT	
LIGHT BALLASTS	20
UNIVERSAL WASTE	20
FLUORESCENT LAMPS	1 COMPACT FLUORESCENT LAMP 1 TWO FOOT LAMP 14 FOUR FOOT LAMPS 17 EIGHT FOOT LAMPS
EMERGENCY LIGHT BATTERIES	7
REFRIGERANT-CONTAINING EQUIPMENT	
WATER FOUNTAIN	1
CHEMICAL AND PETROLEUM PRODUCTS	3
FIRE EXTINGUISHER	3
MISCELLANEOUS ITEMS, MATERIALS AND EQUIPMENT	33
SHARD COLLECTIONS	33
<b>MOLD</b>	
MOLD	FIELD VERIFY
EGGNO	
NOT OBSERVED	

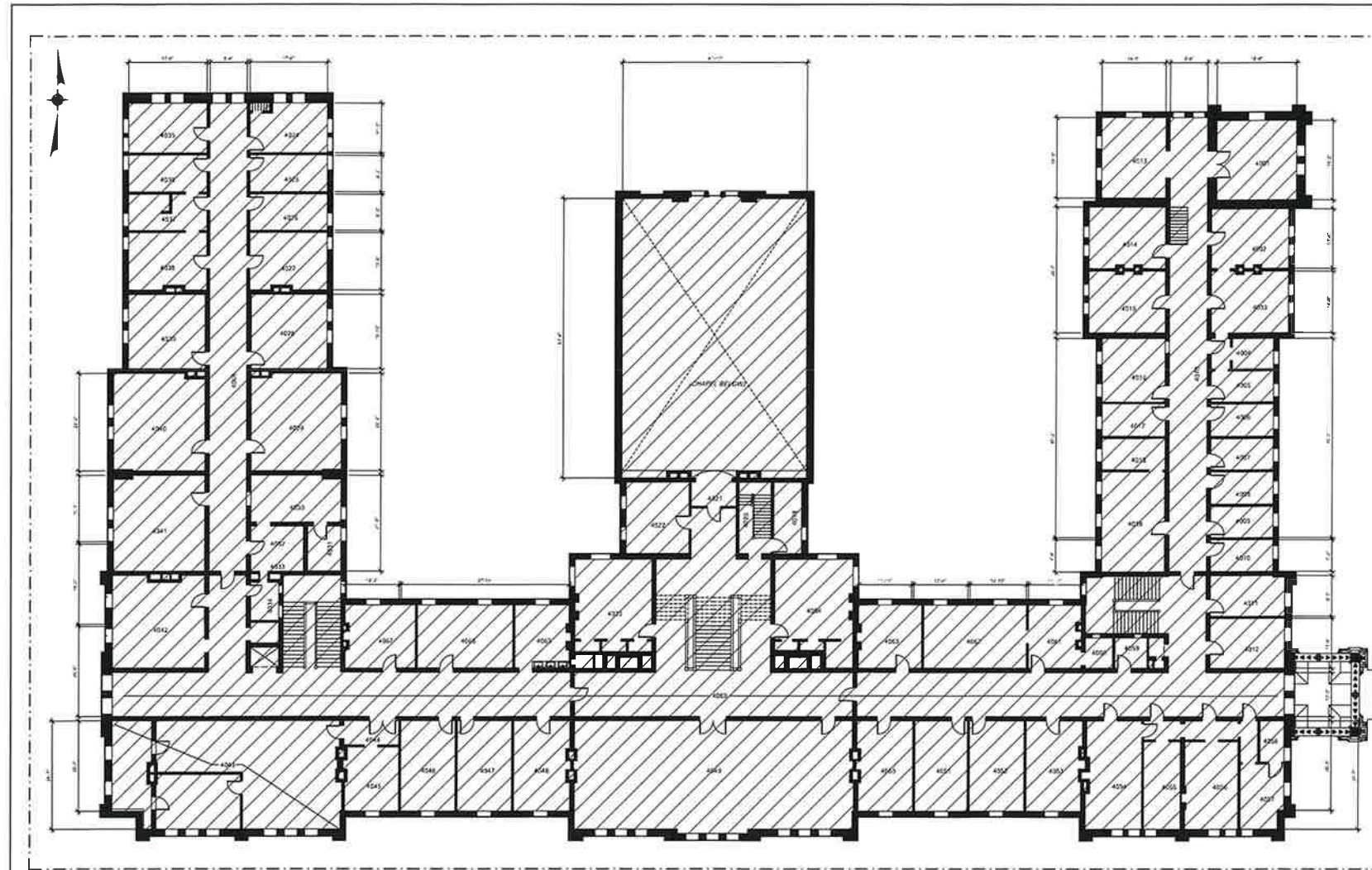
\* QUANTITIES ARE ESTIMATED AND SHALL BE VERIFIED BY THE CONTRACTOR PRIOR TO BEGINNING OF ABATEMENT. SEE NOTE 1 ON SHEET.  
 CU. FT. = CUBIC FEET, SQ. FT. = SQUARE FEET, LN. FT. = LINEAR FEET

NOTES:  
 1. WHILE THE TOTAL QUANTITY OF HAZARDOUS MATERIALS PRESENT ON THIS FLOOR ARE INDICATED IN THE TABLE SHOWN ON THIS DRAWING, A COMPLETE LIST OF THE HAZARDOUS MATERIALS AND THEIR ASSOCIATED QUANTITIES ARE IDENTIFIED BY ASSIGNED ROOM NUMBER IN THE SPECIFICATIONS. WITH REGARD TO THE LEAD-BASED PAINT LOCATIONS, "WALL A" IS THE NORTH WALL, "WALL B" IS THE EAST WALL, "WALL C" IS THE SOUTH WALL AND "WALL D" IS THE WEST WALL.  
 2. REFER TO ABATEMENT NOTES ON SHEET G1.



90% DESIGN SUBMITTAL

SOURCE: INCORPORATED VILLAGE OF GARDEN CITY		UNAUTHORIZED ALTERATION OR ADDITION TO THIS DOCUMENT IS A VIOLATION OF SECTION 7209 OF THE NEW YORK STATE EDUCATION LAW			INCORPORATED VILLAGE OF GARDEN CITY MASSACHUSETTS NEW YORK		PROJECT NO. 3900 DATE: NOVEMBER 2024 SCALE: 3/32" = 1'-0"
NO.	DATE	BY	REV.		PROJECT: P334519 DRAWN BY: ZK CHECKED BY: BV	ST. PAUL'S SCHOOL BUILDING HAZARDOUS MATERIALS ABATEMENT	



SUMMARY OF THIRD FLOOR ABATEMENT / REMOVALS	
MATERIAL	APPROXIMATE QUANTITY*
REGULATED ASBESTOS-CONTAINING MATERIAL	
2' X 2' SMOOTH CEILING TILE (STANDARD)	1,148 SQ. FT.
6" X 6" BROWN FLOOR TILE	352 SQ. FT.
GYPSUM JOINT COMPOUND	16 SQ. FT.
6" X 6" TAN FLOOR TILE	32 SQ. FT.
2' X 2' WHITE FLOOR TILE	54 SQ. FT.
METAL FIRE DOORS IN HALLWAYS AND BUILDING EXITS	FIELD VERIFY
LEAD-BASED PAINT/COATING	
WALLS	1,380 SQ. FT.
BASEBOARD	83 SQ. FT.
FIRE DOOR	40 SQ. FT.
EXIT DOOR CASING	80 SQ. FT.
DUCTWORK PER CONTAINING EQUIPMENT	
LIGHT BALLASTS	52
UNIVERSAL WASTE	
FLUORESCENT LAMPS	3 COMPACT 2 FLUORESCENT LAMPS 2 TWO-FOOT LAMPS 1 THREE-FOOT LAMP 28 FOUR-FOOT LAMPS 2 EIGHT-FOOT LAMPS
EMERGENCY LIGHT BATTERIES	6
REFRIGERANT-CONTAINING EQUIPMENT	
WATER FOUNTAIN	1
CHEMICAL AND PETROLEUM PRODUCTS	
35 OZ. FANTASTIC ESPRESSO	1
SQUARE FLOORS	1
FIRE EXTINGUISHER	1
NON-HAZARDOUS ITEMS, MATERIALS AND EQUIPMENT	
SMOKE DETECTORS	41
MOLD	FIELD VERIFY
GLASS	
GUANO	10,347 SF

\* QUANTITIES ARE ESTIMATED AND SHALL BE VERIFIED BY THE CONTRACTOR PRIOR TO BEGINNING OF ABATEMENT. SEE NOTE 1 THIS SHEET.  
 CU. FT. = CUBIC FEET, SQ. FT. = SQUARE FEET,  
 LN. FT. = LINEAR FEET

NOTES  
 1. WHILE THE TOTAL QUANTITY OF HAZARDOUS MATERIALS PRESENT ON THIS FLOOR ARE INDICATED IN THE TABLE SHOWN ON THIS DRAWING, A COMPLETE LIST OF THE HAZARDOUS MATERIALS AND THEIR ASSOCIATED QUANTITIES ARE LISTED BY ASSIGNED ROOM NUMBER IN THE SPECIFICATIONS. WITH REGARD TO THE LEAD-BASED PAINT LOCATIONS, "WALL A" IS THE NORTH WALL, "WALL B" IS THE EAST WALL, "WALL C" IS THE SOUTH WALL AND "WALL D" IS THE WEST WALL.  
 2. REFER TO ABATEMENT NOTES ON SHEET 01.



90% DESIGN SUBMITTAL

SOURCE: INCORPORATED VILLAGE OF GARDEN CITY	
NO.	BY/CHKD.

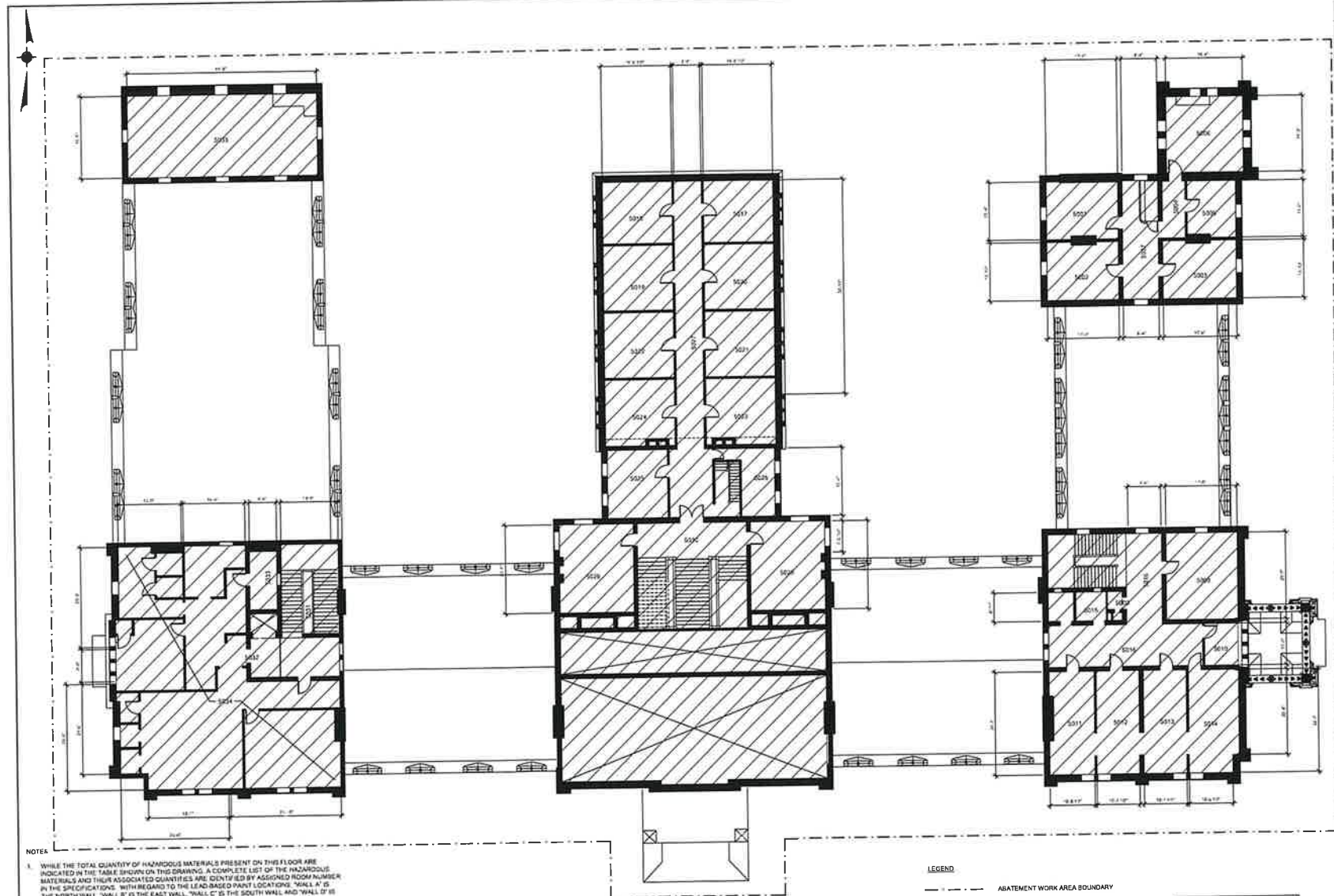
UNAUTHORIZED ALTERATION OR ADDITION TO THIS DOCUMENT IS A VIOLATION OF SECTION 2203 OF THE NEW YORK STATE EDUCATION LAW  
 PROJECT ENGINEER: MH  
 DESIGNED BY: BV  
 CHECKED BY: ZK  
 APPROVED BY: BV



INCORPORATED VILLAGE OF GARDEN CITY  
 NASSAU COUNTY NEW YORK  
 ST. PAUL'S SCHOOL BUILDING  
 HAZARDOUS MATERIALS ABATEMENT

THIRD FLOOR PLAN

PROJECT NO: 8980  
 DATE: NOVEMBER 2024  
 SCALE: 3/32" = 1'-0"  
 DRAWING NO: HM5



SUMMARY OF FOURTH FLOOR ABATEMENT / REMOVALS	
MATERIAL	APPROXIMATE QUANTITY*
REGULATED ASBESTOS-CONTAINING MATERIAL	
FRANETIC BOARD CEILING	80 SQ. FT.
ELECTRICAL PANEL BOARD	8 SQ. FT.
1/2" X 9" TAN FLOOR TILE	850 SQ. FT.
1/2" X 9" BLACK FLOOR TILE W/WHITE STRIPLINE	850 SQ. FT.
DRYWALL JOINT COMPOUND	1,250 SQ. FT.
METAL FIRE DOORS IN HALLWAYS AND BUILDING EXITS	FIELD VERIFY
LEAD-BASED PAINT/COATING	
WALLS	7,896 SQ. FT.
BASEBOARD	30 SQ. FT.
SKIN	6 SQ. FT.
SUSPECT PCB CONTAINING EQUIPMENT	
LIGHT BALLASTS	3
UNIVERSAL WASTE	
FLUORESCENT LAMPS	1 COMPACT FLUORESCENT LAMP 6 FOUR FOOT LAMPS 2 CIRCULAR LAMPS
EMERGENCY LIGHT BATTERY	1
AIR HOOD, SPRAY CANS	3
PERMEABLE CONTAINING EQUIPMENT	
NOT OBSERVED:	
CHEMICAL AND PETROLEUM PRODUCTS	
1 GALLON PAINT CAN	1
BOTTLE OF CARP'S SHAMPOO	1
MISCELLANEOUS ITEMS, MATERIALS AND EQUIPMENT	
SANDBOX DETECTORS	18
MOLD	
MOLD	FIELD VERIFY
GLASS	
GLASS	11,367 SQ. FT.

\* QUANTITIES ARE ESTIMATED AND SHALL BE VERIFIED BY THE CONTRACTOR PRIOR TO BIDDING OR ABATEMENT. SEE NOTE 1 THIS SHEET.  
 CU FT = CUBIC FEET, SQ FT = SQUARE FEET,  
 LN FT = LINEAR FEET

NOTE:  
 1. WHILE THE TOTAL QUANTITY OF HAZARDOUS MATERIALS PRESENT ON THIS FLOOR ARE INDICATED IN THE TABLE SHOWN ON THIS DRAWING, A COMPLETE LIST OF THE HAZARDOUS MATERIALS AND THEIR ASSOCIATED QUANTITIES ARE CONTAINED BY ASSIGNED ROOM NUMBER IN THE SPECIFICATIONS. WITH REGARD TO THE LEAD-BASED PAINT LOCATIONS, "WALL A" IS THE NORTH WALL, "WALL B" IS THE EAST WALL, "WALL C" IS THE SOUTH WALL AND "WALL D" IS THE WEST WALL.  
 2. REFER TO ABATEMENT NOTES ON SHEET G1.

LEGEND:  
 - - - - - ABATEMENT WORK AREA BOUNDARY  
 [Hatched Box] ABATEMENT WORK AREA

90% DESIGN SUBMITTAL

SOURCE: INCORPORATED VILLAGE OF GARDEN CITY		
NO.	REVISION	DATE

UNAUTHORIZED ALTERATION OR ADDITION TO THIS DOCUMENT IS A VIOLATION OF SECTION 203 OF THE NEW YORK STATE EDUCATION LAW

PROJECT MANAGER	DRIVEN BY
MH	ZK
INSPECTOR	CHECKED BY
BV	BV

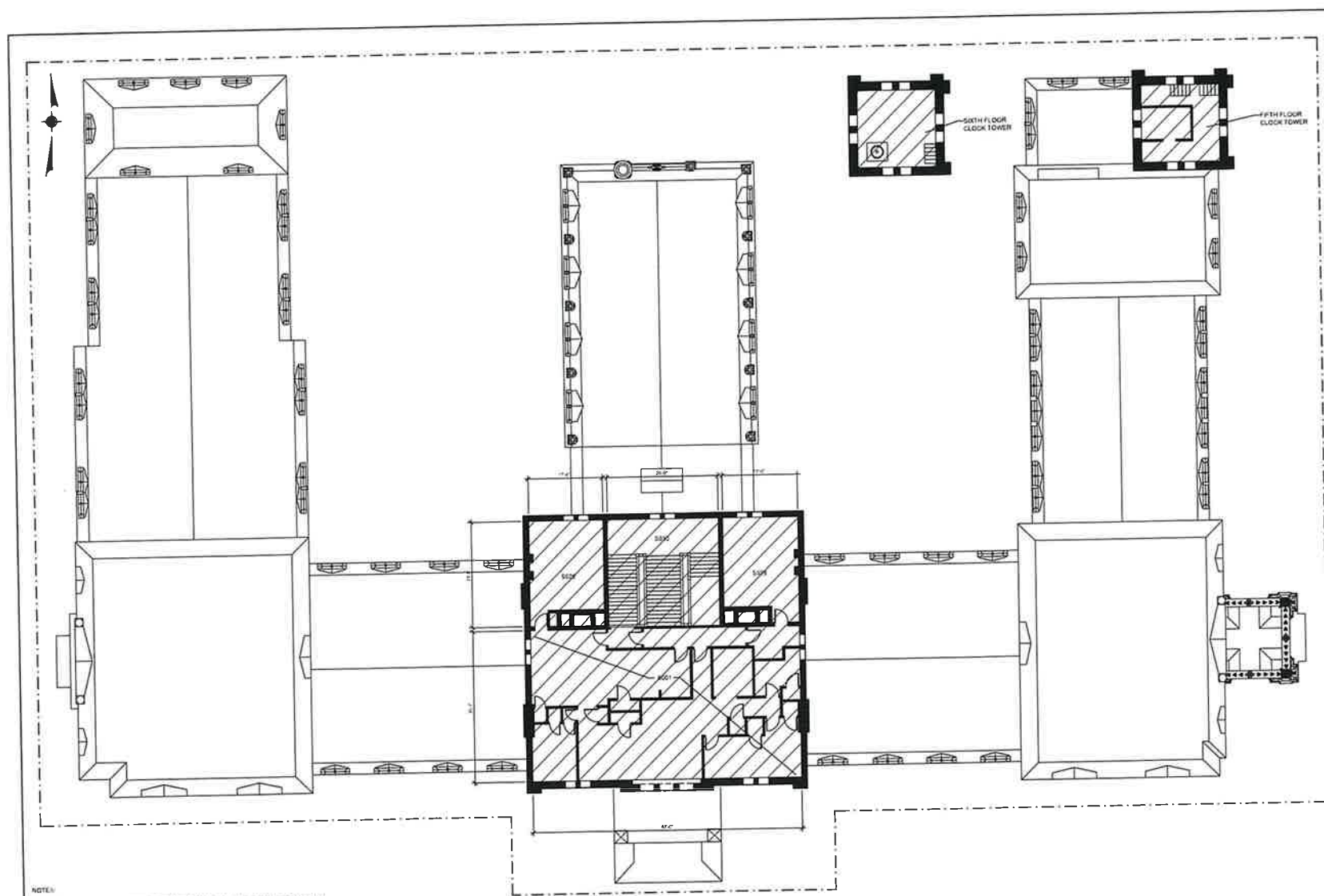


INCORPORATED VILLAGE OF GARDEN CITY  
 NASSAU COUNTY NEW YORK  
 ST. PAUL'S SCHOOL BUILDING  
 HAZARDOUS MATERIALS ABATEMENT

FOURTH FLOOR PLAN

PROJECT NO.	1801
DATE	NOVEMBER 2014
SCALE	3/32" = 1'-0"

HM6



**SUMMARY OF FIFTH FLOOR ABATEMENT / REMOVALS**

MATERIAL	APPROXIMATE QUANTITY *
REGULATED ASBESTOS CONTAINING MATERIAL	
9" x 9" TAN FLOOR TILE	8,380 SQ. FT.
DRYWALL JOINT COMPOUND	1,825 SQ. FT.
WHITE AIR CELL PIPE WRAP	25 SQ. FT.
METAL FIRE DOORS IN HALLWAYS AND BUILDING EXITS	FIELD VERIFY
LEAD-BASED PAINTS/COATING	
NOT OBSERVED	
SUSPECT PCB CONTAINING EQUIPMENT	
LIGHT BALLASTS	8
UNIVERSAL WASTE	
FLUORESCENT LAMPS	CIRCULAR LAMPS
REFRIGERANT CONTAINING EQUIPMENT	
NOT OBSERVED	
CHEMICAL AND PETROLEUM PRODUCTS	
NOT OBSERVED	
MISCELLANEOUS ITEMS, MATERIALS AND EQUIPMENT	
SMOKE DETECTORS	8
MOLD	
MOLD - FIFTH FLOOR	FIELD VERIFY
MOLD - CLOCK TOWER (FIFTH AND SIXTH FLOORS)	FIELD VERIFY
LEAD	
LEAD - FIFTH FLOOR	2,300 SQ. FT.
LEAD - CLOCK TOWER (FIFTH AND SIXTH FLOORS)	800 SQ. FT.

\* QUANTITIES ARE ESTIMATED AND SHALL BE VERIFIED BY THE CONTRACTOR PRIOR TO BIDDING OR ABATEMENT. SEE NOTE 1 THIS SHEET.  
 CU FT = CUBIC FEET, SQ. FT. = SQUARE FEET, LN. FT. = LINEAR FEET.

NOTE:  
 1. WHILE THE TOTAL QUANTITY OF HAZARDOUS MATERIALS PRESENT ON THIS FLOOR ARE INDICATED IN THE TABLE SHOWN ON THIS DRAWING, IT COMPLETELY LIES ON THE HAZARDOUS MATERIALS AND THEIR ASSOCIATED QUANTITIES ARE IDENTIFIED BY ASSIGNED ROOM NUMBER IN THE SCHEDULE. WITH REGARD TO THE LEAD-BASED PAINT LOCATIONS, "WALL A" IS THE NORTH WALL, "WALL B" IS THE EAST WALL, "WALL C" IS THE SOUTH WALL AND "WALL D" IS THE WEST WALL.  
 2. REFER TO ABATEMENT NOTES ON SHEET G1.

LEGEND:  
 - - - - - ABATEMENT WORK AREA BOUNDARY  
 [Hatched Box] ABATEMENT WORK AREA

90% DESIGN SUBMITTAL

SOURCE: INCORPORATED VILLAGE OF GARDEN CITY

NO.	DATE	REVISION	BY

UNAUTHORIZED ALTERATION OR ADDITION TO THIS DOCUMENT IS A VIOLATION OF SECTION 2209 OF THE NEW YORK STATE EDUCATION LAW

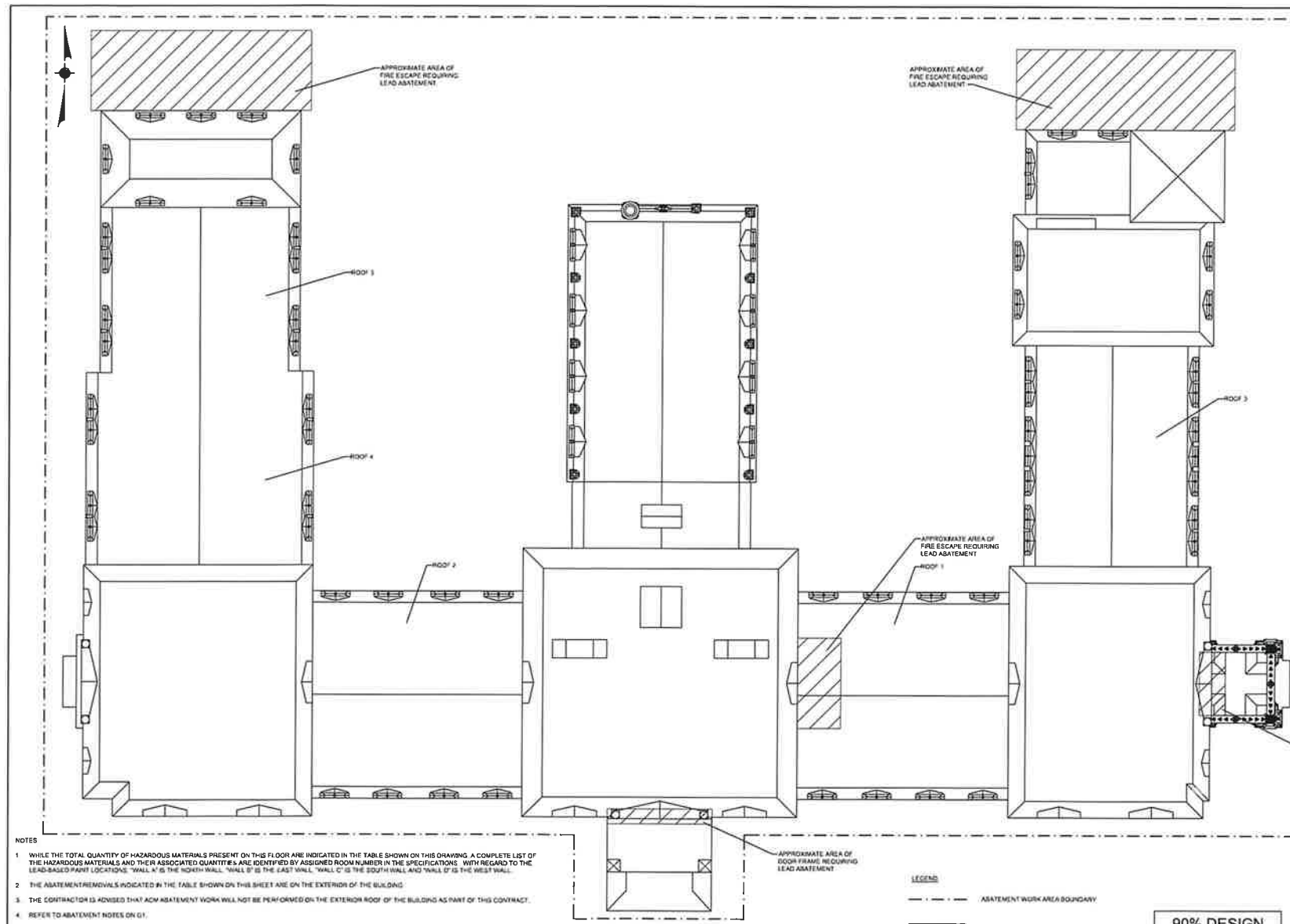
DESIGNED BY	CHK'D BY
BH	ZK
REVISIONS BY	CHECKED BY
BV	BV



INCORPORATED VILLAGE OF GARDEN CITY  
 NASSAU COUNTY NEW YORK  
 ST. PAUL'S SCHOOL BUILDING  
 HAZARDOUS MATERIALS ABATEMENT

FIFTH FLOOR PLAN / CLOCK TOWER  
 SIXTH FLOOR PLAN

PROJECT NO. 2022  
 DATE: NOVEMBER 2024  
 SCALE: 3/32"=1'-0"  
 DRAWING NO. HM7



SUMMARY OF EXTERIOR ABATEMENT / REMOVALS	
MATERIAL	APPROXIMATE QUANTITY*
<b>REGULATED ASBESTOS-CONTAINING MATERIAL</b>	
NOT APPLICABLE (SEE NOTE 3 THIS SHEET)	
<b>LEAD BASED PAINT/COATING</b>	
FIRE ESCAPE 1 FENCE RAIL AND 1 BEAM	750 SQ. FT.
DOOR FRAME	25 SQ. FT.
FIRE ESCAPE 2 1-BEAM	1,750 SQ. FT.
ROOF LEVEL FIRE ESCAPE STAIRS AND STRINGER	375 SQ. FT.
DOOR CASING	25 SQ. FT.
<b>SUSPECT PCB-CONTAINING EQUIPMENT</b>	
NOT APPLICABLE	
<b>UNIVERSAL WASTE</b>	
NOT APPLICABLE	
<b>REFRIGERANT-CONTAINING EQUIPMENT</b>	
NOT APPLICABLE	
<b>EXTERNAL AND FIBROUS PRODUCTS</b>	
NOT APPLICABLE	
<b>MISCELLANEOUS ITEMS, MATERIALS AND EQUIPMENT</b>	
NOT APPLICABLE	
SAND	
NOT APPLICABLE	
GLASS	
NOT APPLICABLE	

\* QUANTITIES ARE ESTIMATED AND SHALL BE VERIFIED BY THE CONTRACTOR PRIOR TO BIDDING OR ABATEMENT. SEE NOTE 1 THIS SHEET.  
 SQ. FT. = SQUARE FEET, SQ. FT. = SQUARE FEET, LN. FT. = LINEAR FEET.

- NOTES**
1. WHILE THE TOTAL QUANTITY OF HAZARDOUS MATERIALS PRESENT ON THIS FLOOR ARE INDICATED IN THE TABLE SHOWN ON THIS DRAWING, A COMPLETE LIST OF THE HAZARDOUS MATERIALS AND THEIR ASSOCIATED QUANTITIES ARE IDENTIFIED BY ASSIGNED ROOM NUMBER IN THE SPECIFICATIONS WITH REGARD TO THE LEAD-BASED PAINT LOCATIONS. "WALL A" IS THE NORTH WALL, "WALL B" IS THE EAST WALL, "WALL C" IS THE SOUTH WALL AND "WALL D" IS THE WEST WALL.
  2. THE ABATEMENT REMOVALS INDICATED IN THE TABLE SHOWN ON THIS SHEET ARE ON THE EXTERIOR OF THE BUILDING.
  3. THE CONTRACTOR IS ADVISED THAT ACM ABATEMENT WORK WILL NOT BE PERFORMED ON THE EXTERIOR ROOF OF THE BUILDING AS PART OF THIS CONTRACT.
  4. REFER TO ABATEMENT NOTES ON G1.

SOURCE: INCORPORATED VILLAGE OF GARDEN CITY

NO.	DATE	REVISION	BY

UNAUTHORIZED ALTERATION OR ADDITION TO THIS DOCUMENT IS A VIOLATION OF SECTION 7209 OF THE NEW YORK STATE EDUCATION LAW	
PROJECT MANAGER	DRAWN BY
MH	ZK
DESIGNED BY	CHECKED BY
BV	BV



INCORPORATED VILLAGE OF GARDEN CITY  
 NASSAU COUNTY NEW YORK  
**ST. PAUL'S SCHOOL BUILDING**  
**HAZARDOUS MATERIALS ABATEMENT**

**90% DESIGN SUBMITTAL**

ROOF PLAN / EXTERIOR WORK

PROJECT NO.	8992
DATE	NOVEMBER 2024
SCALE	3/32" = 1'-0"

**HM8**