

The Mayor's Committee on St. Paul's  
*Invites Garden City Residents to a*

---

# TOWN HALL MEETING

*on the*

# FUTURE OF ST. PAUL'S

---

WEDNESDAY, OCTOBER 12<sup>TH</sup>  
7pm - 10pm  
Garden City High School Auditorium

*Presentations will include:*

*The adaptive re-use option of the main building and surrounding area*

*Preliminary schematic drawings of each floor in detail*

*Discussion and questions to follow*



*Future Town Hall meetings to discuss alternative uses of the property  
will be scheduled by the Committee.*



## ***Preserve the Past - Create the Future***

### **ADAPTIVE REUSE OF ST. PAUL'S**

Many of these programs already exist with limited space and need to expand.

**If deprived of this opportunity – *where do they go?***

**If not at St. Paul's – *then where?***

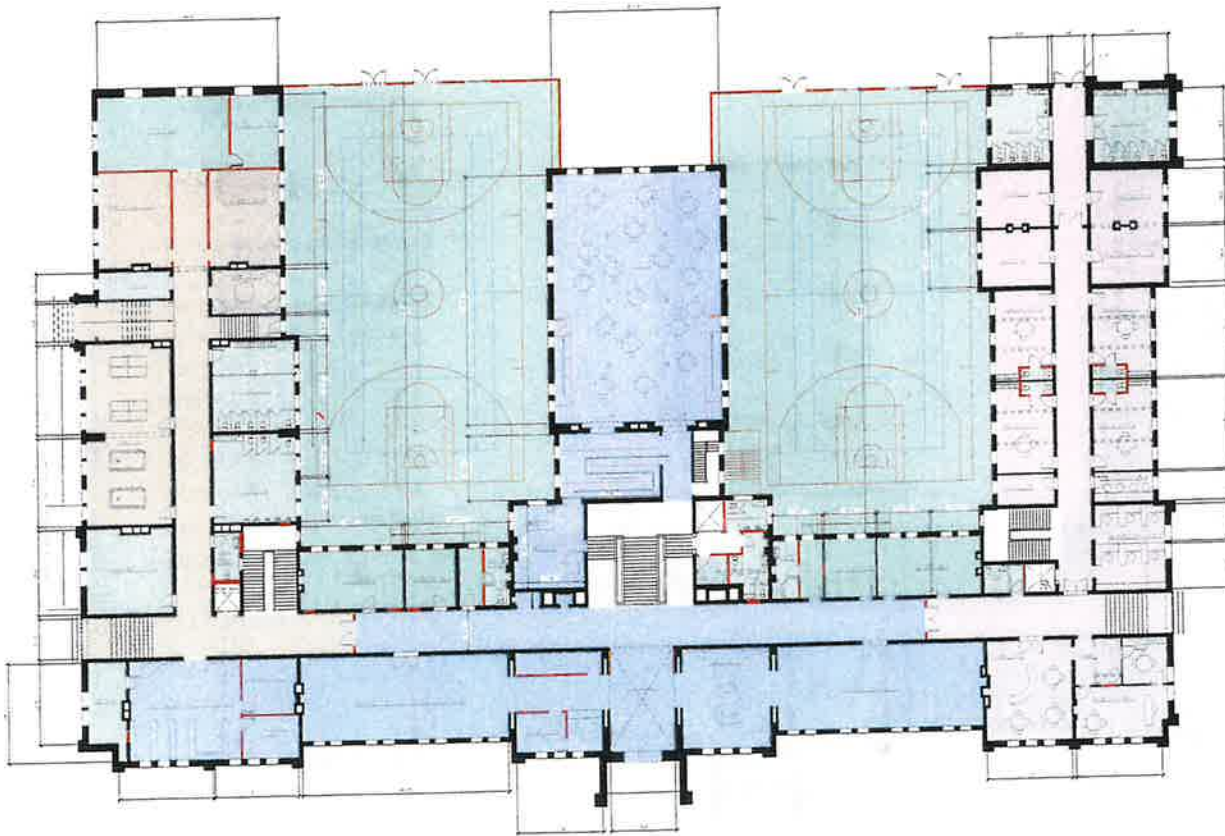
|                                                                                                                                                                                                                                                                                                                                                                                                                                                    |                                                                                                                                                                                                                                                                                                                                                                                                                                                                                                                                                        |
|----------------------------------------------------------------------------------------------------------------------------------------------------------------------------------------------------------------------------------------------------------------------------------------------------------------------------------------------------------------------------------------------------------------------------------------------------|--------------------------------------------------------------------------------------------------------------------------------------------------------------------------------------------------------------------------------------------------------------------------------------------------------------------------------------------------------------------------------------------------------------------------------------------------------------------------------------------------------------------------------------------------------|
| <p><b><u>Community Center</u></b></p> <p><b>Multipurpose Flex Space</b></p> <p><b>Meeting Rooms</b></p> <p><b>Exhibition Space</b></p> <p><b>Reception/Event Space</b></p> <p><b>Coat Room/Security</b></p> <p><b>Teen Center</b></p> <p><b>Chapel:</b> non-denominational</p> <p><b>Culinary Space</b></p> <p><b>Play Space</b></p> <p><b>Quiet Room</b></p> <p><b>Garden City Research Area:</b><br/>Inclusive of Conference Room and Office</p> | <p><b><u>Athletics Programs</u></b></p> <p><b>Weight Training Room</b></p> <p><b>Cardio Training Room</b></p> <p><b>Exercise Rooms</b></p> <p><b>Yoga Room</b></p> <p><b>Pickle Ball Courts</b></p> <p><b>Storage Room</b></p> <p><b>Indoor Sports Space***</b></p> <p><b>Indoor Tennis Court(s)***</b></p> <p><b>Locker/Shower Rooms**</b></p> <p><b>Outdoor Turf Field*</b></p> <p><b>Sports Office</b></p> <p><b>Sports Assembly Room</b></p> <p>* Location TBD – see scale</p> <p>** Shared space with Performing Arts</p> <p>*** As an option</p> |
| <p><b><u>Performing Arts Center</u></b></p> <p><b>Theater 300+ seats***:</b><br/>Accommodating performances in dance,<br/>music, lectures, recitals, plays/musicals.</p> <p><b>Sound/Lighting/Storage</b></p> <p><b>Theater Storage/Stagecraft</b></p> <p><b>Ticket Booth</b></p> <p><b>Green Room</b></p>                                                                                                                                         | <p><b><u>Children's Center</u></b></p> <p><b>Admin Offices</b></p> <p><b>Children's Rooms</b></p> <p><b>Special Needs Room</b></p> <p><b>Dance Room</b></p> <p><b>Music Room</b></p> <p><b>Indoor Play Area</b></p>                                                                                                                                                                                                                                                                                                                                    |

*handouts at Town Hall*

*10/12/22*

|                                                                                                                                                                                                                                                                                                                                                                                           |                                                                    |
|-------------------------------------------------------------------------------------------------------------------------------------------------------------------------------------------------------------------------------------------------------------------------------------------------------------------------------------------------------------------------------------------|--------------------------------------------------------------------|
| <b>Locker Rooms**</b><br><b>** Shared space with Athletics</b><br><b>*** As an option.</b>                                                                                                                                                                                                                                                                                                | <b>Staff Space</b><br><b>Computer Stations</b>                     |
| <b><u>Department of Recreation</u></b><br><b>Admin/Reception</b><br><b>Arts/Crafts Studio</b><br><b>Painting Studios</b><br><b>Sculpture Studio</b><br><b>Science/Computer Labs</b><br><b>Robotics and Lego Rooms</b><br><b>Teen Game Room</b><br><b>Music Studios</b><br><b>Aerobic Studio</b><br><b>Dance/Movement Studios</b><br><b>Photography Studio</b><br><b>Filmmaking Studio</b> | <b><u>Events Garden Courtyard***</u></b><br><b>***As an option</b> |
| <b><u>Shared Facilities:</u></b><br><b>Mechanical, Electrical, Info Tech, Bathrooms, Elevators,</b><br><b>Storage, Ancillary, Culinary Support, Office of Emergency</b><br><b>Management (OEM), Area for Ambulance Staff Space and</b><br><b>Support Space During Emergencies.</b>                                                                                                        |                                                                    |

PROGRESS  
DRAWINGS 2



| Color      | Description       |
|------------|-------------------|
| Orange     | Community Center  |
| Blue       | Storage Rooms     |
| Pink       | Youth Center      |
| Light Blue | Storage Rooms     |
| Green      | Basketball Courts |
| Blue       | Central Area      |

INCORPORATED VILLAGE  
OF GARDEN CITY  
**ST. PAULS**  
FIRST FLOOR PLAN  
ATHLETIC SCHEME

|                |                |
|----------------|----------------|
| Project Number | Project Number |
| Drawn By       | Drawn Date     |
| Checked By     | Checked Date   |
| Scale          | Scale          |
| <b>A-101</b>   |                |

PROGRESS  
DRAWINGS 2



| Color | Description |
|-------|-------------|
|       | Corridor    |
|       | Public Area |
|       | Staircase   |
|       | Storage     |
|       | Workshop    |
|       | Change Room |
|       | Locker Room |
|       | Office      |
|       | Reception   |
|       | Restroom    |
|       | Shower      |
|       | Storage     |
|       | Workshop    |

INCORPORATED VILLAGE  
OF GARDEN CITY

ST. PAULS

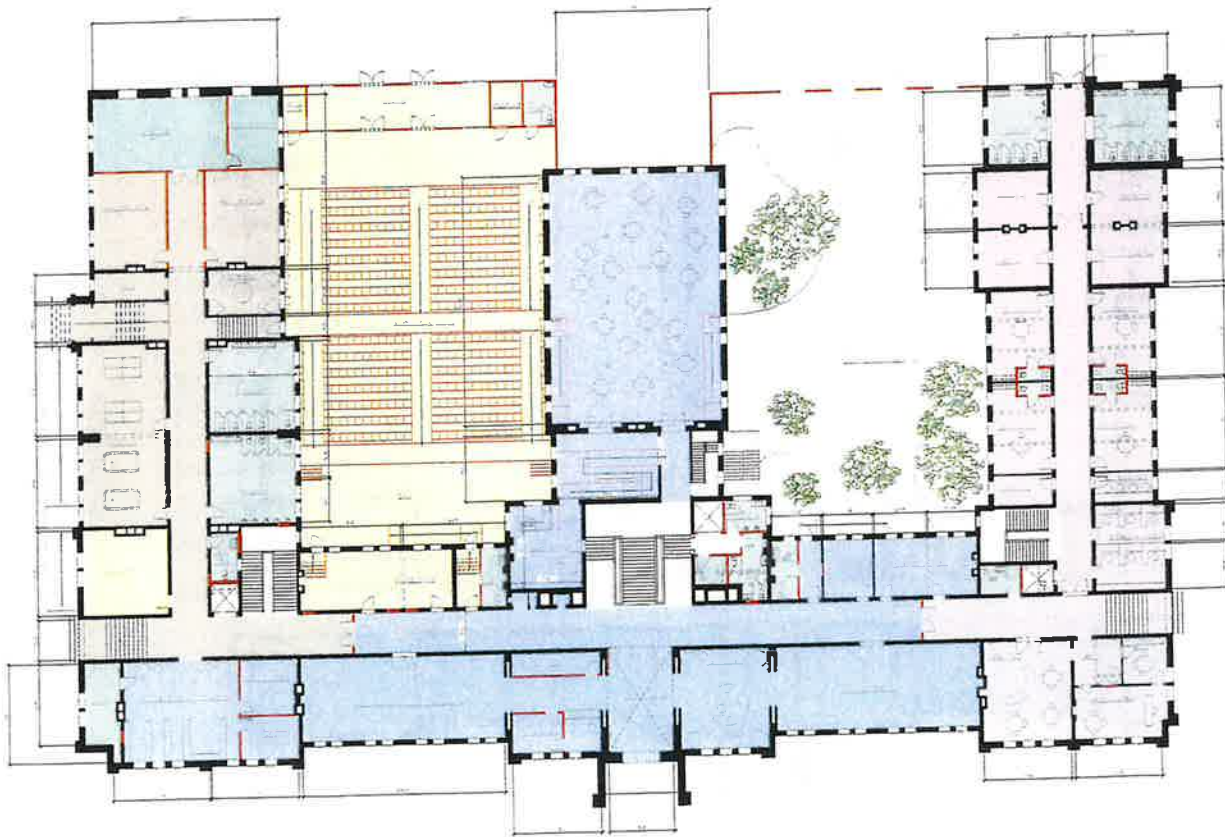
LOWER LEVEL FLOOR PLAN  
ATHLETIC SCHEME

Project Number: 1000000000  
Scale: 1/8" = 1'-0"  
Drawn By: J. Smith  
Checked By: J. Smith

A-100



PROGRESS  
DRAWINGS 2



|       |                 |
|-------|-----------------|
| Color | Geographic      |
|       | Contour/Color   |
|       | Perimeter/Color |
|       | Yard/Color      |
|       | Street/Color    |
|       | Interior/Color  |
|       | Exterior/Color  |
|       | Water/Color     |

INCORPORATED VILLAGE  
OF GARDEN CITY

ST. PAULS

FIRST FLOOR PLAN  
PERFORMANCE / ARTS  
SCHEME

|              |                |
|--------------|----------------|
| Project Name | Project Number |
| Scale        | Notes/Date     |
| Drawn by     | Architect      |
| Checked by   | Checker        |

A-101

Type: 01/10/01

| Color                                                                                 | Destination               |
|---------------------------------------------------------------------------------------|---------------------------|
|  | Emergency Center          |
|  | Perimeter Center          |
|  | Offsite                   |
|  | Storage / UPS / Emergency |
|  | Processed Communication   |
|  | Control Center/Room       |
|  | Unlabeled                 |

INCORPORATED VILLAGE  
OF GARDEN CITY

ST. PAULS

LOWER LEVEL FLOOR PLAN  
PERFORMANCE / ARTS  
SCHEME

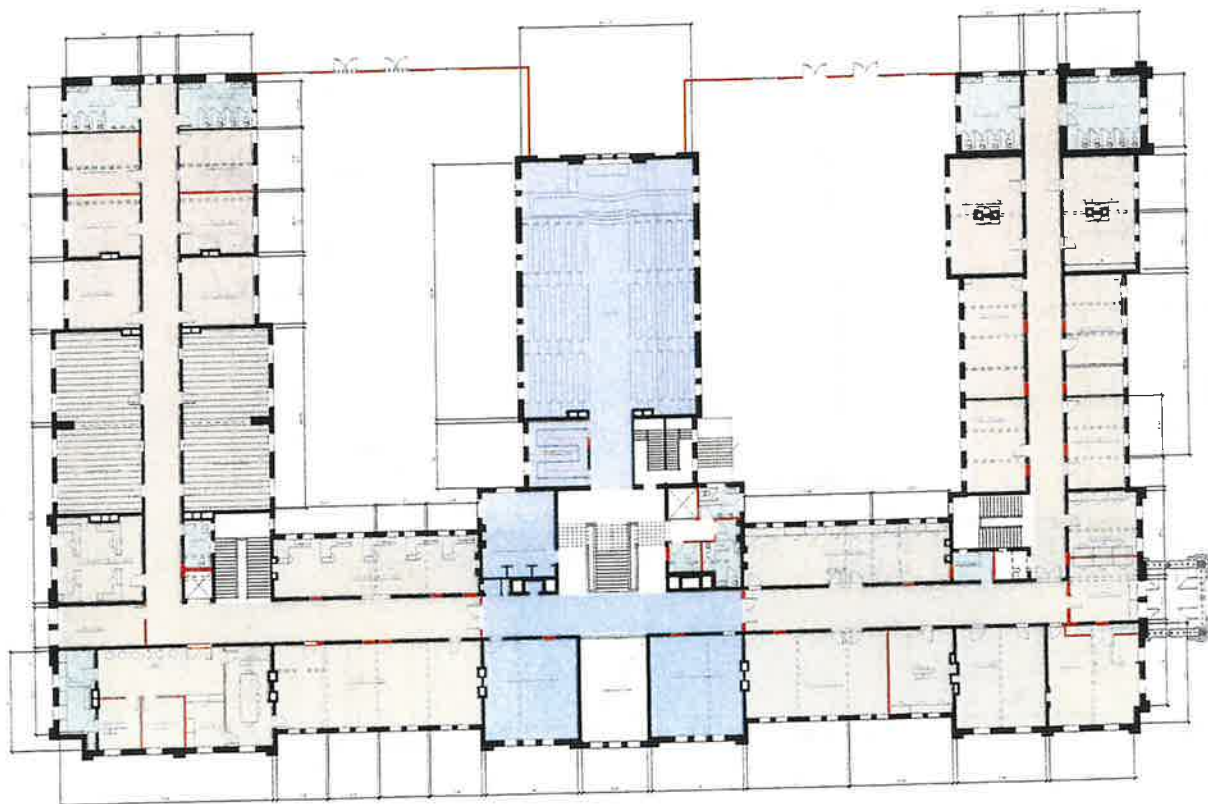
|                |              |
|----------------|--------------|
| Project Number | Project Name |
| 1000           | New Jersey   |
| Branch No.     | Auto         |
| Checked By     | Check        |

A-100

Page 111



# PROGRESS DRAWINGS 2

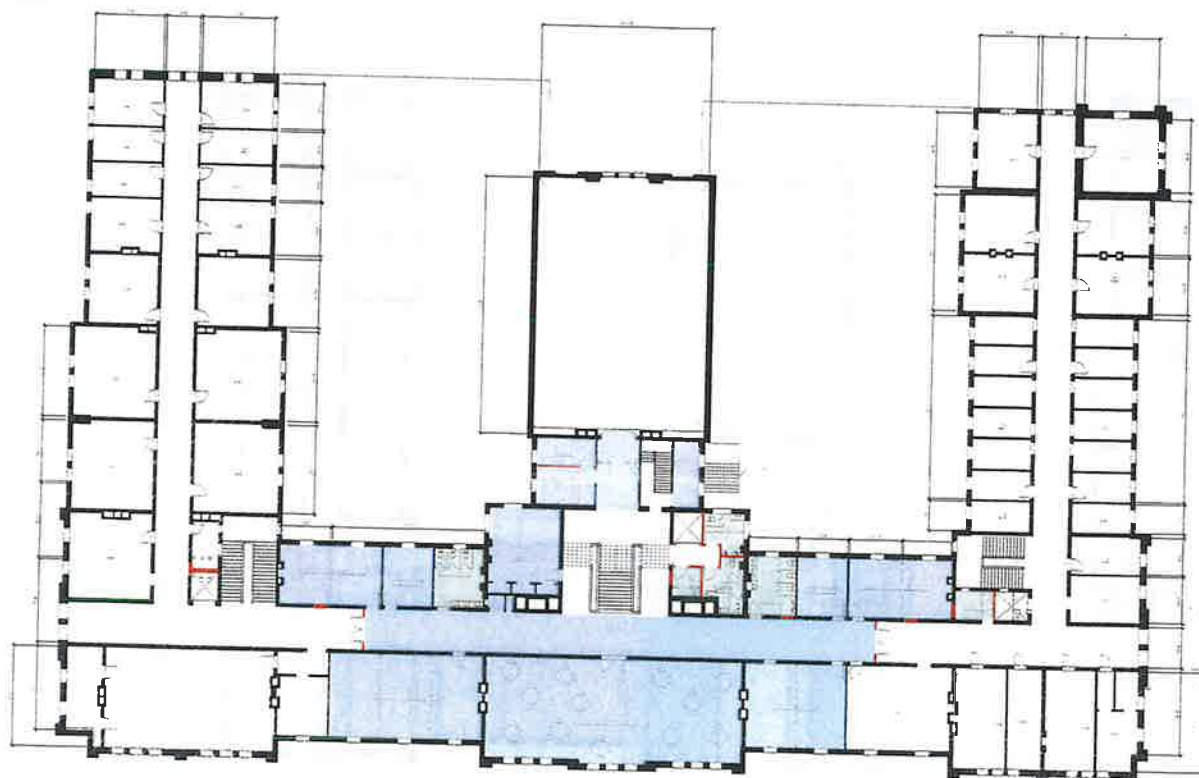


| Color | Description             |
|-------|-------------------------|
| —     | Continued Ceiling       |
| —     | Department of Education |
| —     | Storage / Library       |
| —     | Proposed Construction   |
| —     | Existing Construction   |
| —     | Lot Line                |

|                                     |                |
|-------------------------------------|----------------|
| INCORPORATED VILLAGE OF GARDEN CITY |                |
| ST. PAULS                           |                |
| SECOND FLOOR PLAN                   |                |
| Drawn by                            | Project Number |
| Scale                               | Issue Date     |
| Drawn by                            | Author         |
| Checked by                          | Checker        |
| A-102                               |                |
| Task                                | Order          |

PROGRESS  
DRAWINGS 2



INCORPORATED VILLAGE  
OF GARDEN CITY

ST. PAULS

THIRD FLOOR PLAN

Sheet Number: \_\_\_\_\_ Project Number: \_\_\_\_\_  
 Date: \_\_\_\_\_ Issue Date: \_\_\_\_\_  
 Drawn By: \_\_\_\_\_ Admin: \_\_\_\_\_  
 Checked By: \_\_\_\_\_ Checked: \_\_\_\_\_

A-103

## PROGRESS DRAWINGS 2

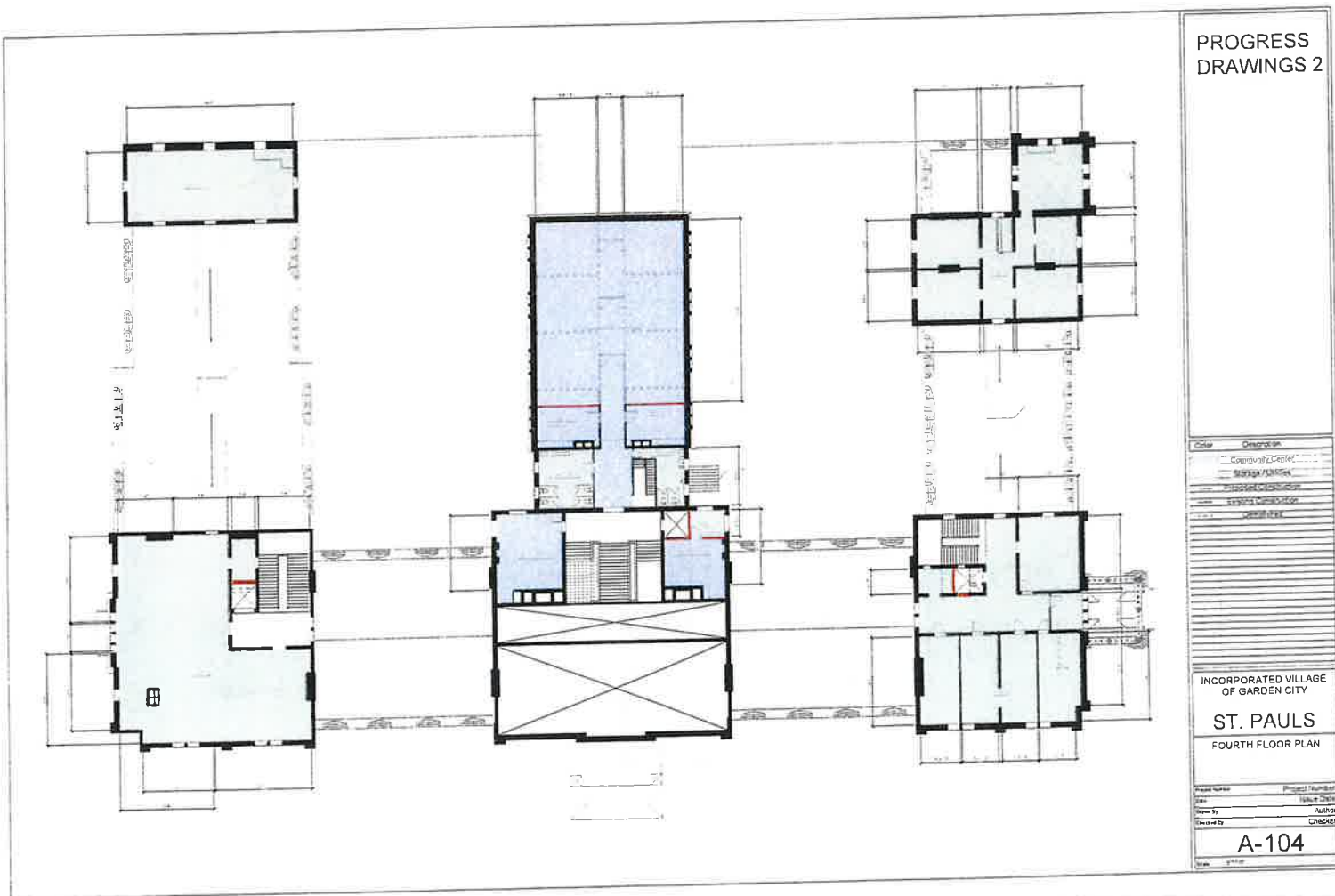
| Color | Description          |
|-------|----------------------|
| ---   | Community Center     |
| ---   | Storage / Office     |
| ---   | Unpaved Circulation  |
| ---   | Existing Circulation |
| ---   | Central Park         |

INCORPORATED VILLAGE  
OF GARDEN CITY

ST. PAULS  
FOURTH FLOOR PLAN

|                |              |
|----------------|--------------|
| Project Number | Project Name |
| Date           | Issue Date   |
| Issued By      | Auth         |
| Checked By     | Check        |

A-104



PROGRESS  
DRAWINGS 2



INCORPORATED VILLAGE  
OF GARDEN CITY

ST. PAULS  
FIFTH FLOOR PLAN

|           |                |
|-----------|----------------|
| Architect | Project Number |
| Site      | Issue Date     |
| Owner     | Author         |
| Drawn By  | Checker        |

A-105

Scale 1/8" = 1'-0"

[illegible]

ST PAULS

ROOF PLAN

|             |              |
|-------------|--------------|
| Case Number | Project Name |
| Geo         | Maple C      |
| Drawn By    | Aut          |
| Checked By  | Chen         |

A-106

[illegible]

NORTH ELEVATION  
ATHLETIC SCHEME

A-300



This architectural elevation drawing depicts the main facade of the Victoria and Albert Museum. The central feature is a large, ornate dome topped with a clock tower. The facade is characterized by multiple levels of arched windows and decorative stonework. A prominent red staircase is visible on the left side of the central dome, and a blue staircase is on the right. The drawing is a detailed line drawing with some color highlights in red and blue.

INCORPORATED VILLAGE  
OF GARDEN CITY

NORTH ELEVATION  
PERFORMANCE / ARTS  
SCHEME

A-300

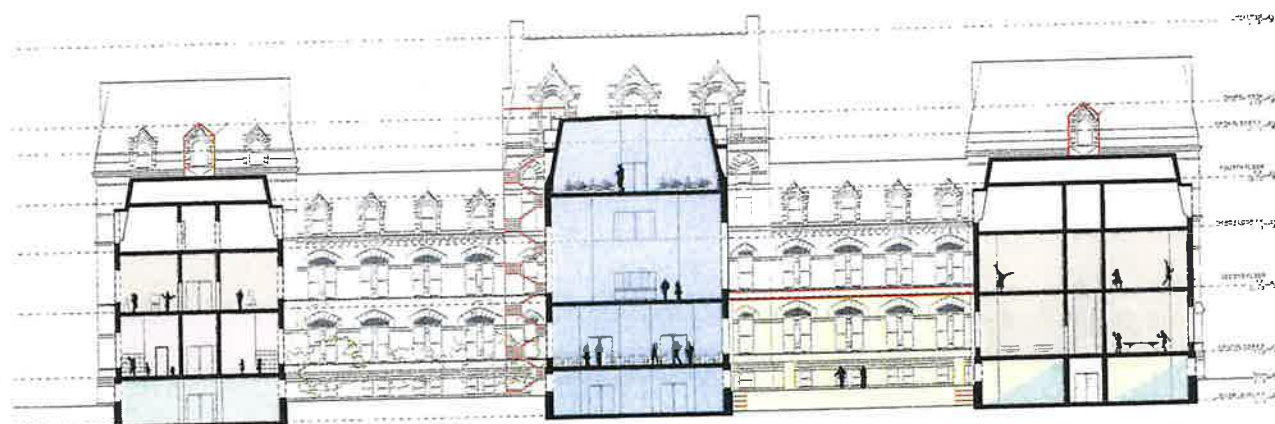
1948

| Color | Description                   |
|-------|-------------------------------|
|       | Community Center              |
|       | Polio Vaccine Center          |
|       | Allies                        |
|       | Youth Center                  |
|       | Department of Recreation      |
|       | Storage/Utilities / Emergency |
|       | Landscaping                   |
|       | Wastewater Collection         |
|       | Building Maintenance          |

**NORTH SECTION  
ATHLETIC SCHEME**

|            |                |
|------------|----------------|
| Author     | Project Number |
| Date       | Issue Date     |
| Drawn By   | Author         |
| Checked By | Checker        |
| A-200      |                |
| Title      | Notes          |

PROGRESS  
DRAWINGS 2



|                            |                                                   |
|----------------------------|---------------------------------------------------|
| Client                     | St. Pauls                                         |
| Project Name               | St. Pauls North Section Performance / Arts Scheme |
| Location                   | St. Pauls                                         |
| Architect                  | St. Pauls North Section Performance / Arts Scheme |
| Engineer                   | St. Pauls North Section Performance / Arts Scheme |
| Structural Engineer        | St. Pauls North Section Performance / Arts Scheme |
| Electrical Engineer        | St. Pauls North Section Performance / Arts Scheme |
| Plumbing Engineer          | St. Pauls North Section Performance / Arts Scheme |
| Heating Engineer           | St. Pauls North Section Performance / Arts Scheme |
| Lighting Engineer          | St. Pauls North Section Performance / Arts Scheme |
| Acoustic Engineer          | St. Pauls North Section Performance / Arts Scheme |
| Fire Engineer              | St. Pauls North Section Performance / Arts Scheme |
| Transport Engineer         | St. Pauls North Section Performance / Arts Scheme |
| Environmental Engineer     | St. Pauls North Section Performance / Arts Scheme |
| Health and Safety Engineer | St. Pauls North Section Performance / Arts Scheme |
| Other                      |                                                   |

INCORPORATED VILLAGE  
OF GARDEN CITY

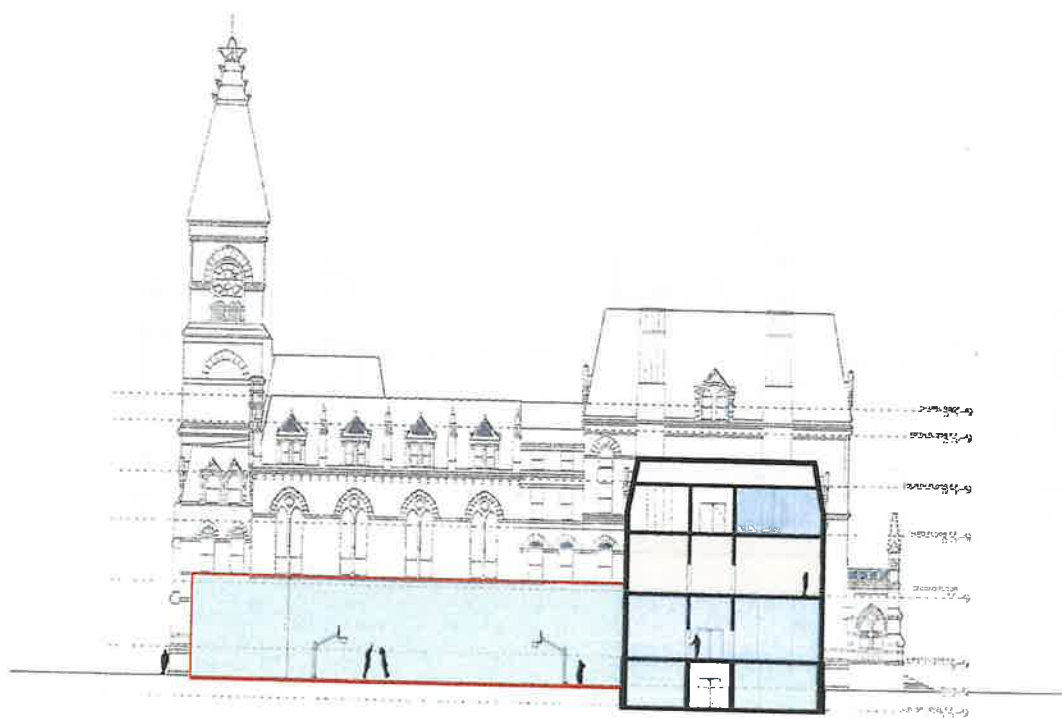
ST. PAULS

NORTH SECTION  
PERFORMANCE / ARTS  
SCHEME

|                |                         |
|----------------|-------------------------|
| Project Number | St. Pauls North Section |
| Date           | St. Pauls North Section |
| Drawn By       | St. Pauls North Section |
| Checked By     | St. Pauls North Section |

A-200

PROGRESS  
DRAWINGS 2



| Color | Description              |
|-------|--------------------------|
| ---   | Existing Condition       |
| ---   | Proposed Construction    |
| ---   | Structural Reinforcement |
| ---   | Foundation               |
| ---   | Roofing                  |
| ---   | Interior Finishes        |
| ---   | Exterior Finishes        |
| ---   | Landscaping              |
| ---   | Site Work                |
| ---   | Other                    |

INCORPORATED VILLAGE  
OF GARDEN CITY

ST. PAULS

SECTION THRU THEATER  
ATHLETIC SCHEME

|                |              |
|----------------|--------------|
| Project Number | Sheet Number |
| Date           | Drawn Date   |
| Drawn By       | Checked By   |
| Project No.    | Sheet No.    |

A-201

PROGRESS  
DRAWINGS 2



| Color | Description           |
|-------|-----------------------|
| ---   | COMMONS CLOSET        |
| ---   | PERFORMER CLOSET      |
| ---   | REHEARSAL             |
| ---   | DEPARTMENT OF THEATRE |
| ---   | REHEARSAL             |
| ---   | REHEARSAL             |
| ---   | REHEARSAL             |

INCORPORATED VILLAGE  
OF GARDEN CITY

ST. PAULS

SECTION THRU THEATER  
PERFORMANCE / ARTS  
SCHEME

| Project Number | Project Name |
|----------------|--------------|
| 100            | 1000         |
| 1000           | 1000         |
| 1000           | 1000         |

A-201



[illegible]

ST. PAULS  
PROPOSED PLOT PLAN  
OPTION 3

Physical Number  
Date  
Checked by  
F. Number, N.Y.

**G-001**

State of New York







## ***Preserve the Past – Create the Future Community Center***

### **ADAPTIVE REUSE OF ST. PAUL'S**

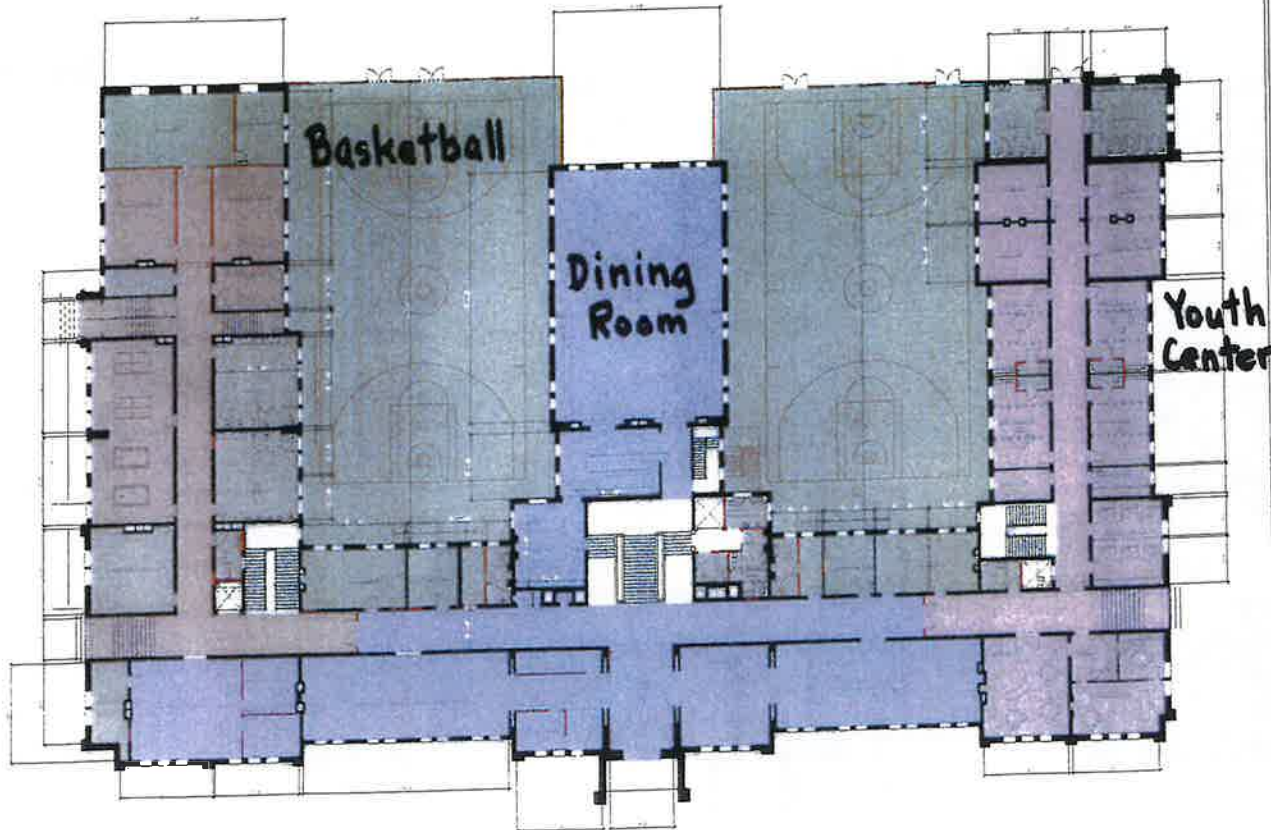
These uses are a direct response to resident requests gathered in various current forums as well as from historical surveys done in the Village.

These potential uses are *flexible* for a multi-faceted Community Center.

|                                                                                                                                                                                                                                                                                                                                                           |                                                                                                                                                                                                                                                                                                                    |
|-----------------------------------------------------------------------------------------------------------------------------------------------------------------------------------------------------------------------------------------------------------------------------------------------------------------------------------------------------------|--------------------------------------------------------------------------------------------------------------------------------------------------------------------------------------------------------------------------------------------------------------------------------------------------------------------|
| <b><u>Community Center</u></b><br>Multipurpose Flex Space<br>Meeting Rooms<br>Exhibition Space<br>Receptions/Event Space<br>Teen Center<br>Chapel (non-denominational)<br>Culinary Space<br>Dining Area<br>Play Area<br>Quiet Room<br>Security/Coat Room<br>Garden City Research Area<br>(Conference Room/Office)<br>Areas for Senior Citizens activities | <b><u>Athletic Programs</u></b><br>Cardio Training Room<br>Weight Training Room<br>Pickle Ball Courts<br>Indoor Tennis Court(s)<br>Indoor Sports Space<br>Sports Assembly Room<br>Exercise Rooms<br>Yoga Room<br>Locker/Shower Rooms<br>Outdoor Turf Field<br>Basketball Courts (indoor)<br>Soccer Fields (indoor) |
| <b><u>Performing Arts Center (PAC)</u></b><br>Theatre 300+ seats<br>Dance, Music, Recitals<br>Lectures, Plays, Musicals<br>Sound/Lighting/Storage<br>Theater Storage/Stagecraft<br>Ticket Booth<br>Green Room<br>Locker/Shower Rooms                                                                                                                      | <b><u>Children's Center</u></b><br>Children's Rooms<br>Special Needs Rooms<br>Dance Room<br>Music Room<br>Computer Stations<br>Indoor Play Area<br>Computer Stations<br>Admin Offices/Staff Area                                                                                                                   |

|                                                                                                                                                                                                                                                                                                                                          |                                                                                                                                           |
|------------------------------------------------------------------------------------------------------------------------------------------------------------------------------------------------------------------------------------------------------------------------------------------------------------------------------------------|-------------------------------------------------------------------------------------------------------------------------------------------|
| <p><b><u>Department of Recreation</u></b></p> <p>Arts/Crafts Studio<br/> Painting Studios<br/> Sculpture Studio<br/> Dance/Movement Studios<br/> Music Studios<br/> Aerobic Studios<br/> Science/Computer Labs<br/> Robotics and Lego Rooms<br/> Teen Game Room<br/> Photography Studio<br/> Film Making Studio<br/> Admin/Reception</p> | <p><b><u>Events Garden Courtyard</u></b></p> <p>Take a leisurely walk around the courtyard<br/> Enjoy a relaxing evening with friends</p> |
| <p><b><u>Shared Facilities</u></b></p> <p>Mechanical, Electrical, Info Tech, Bathrooms, Elevators, Storage, Ancillary, Culinary Support, Office of Emergency Management (OEM), Area for Ambulance Staff and Support Space During Emergencies.</p>                                                                                        |                                                                                                                                           |

## Option A



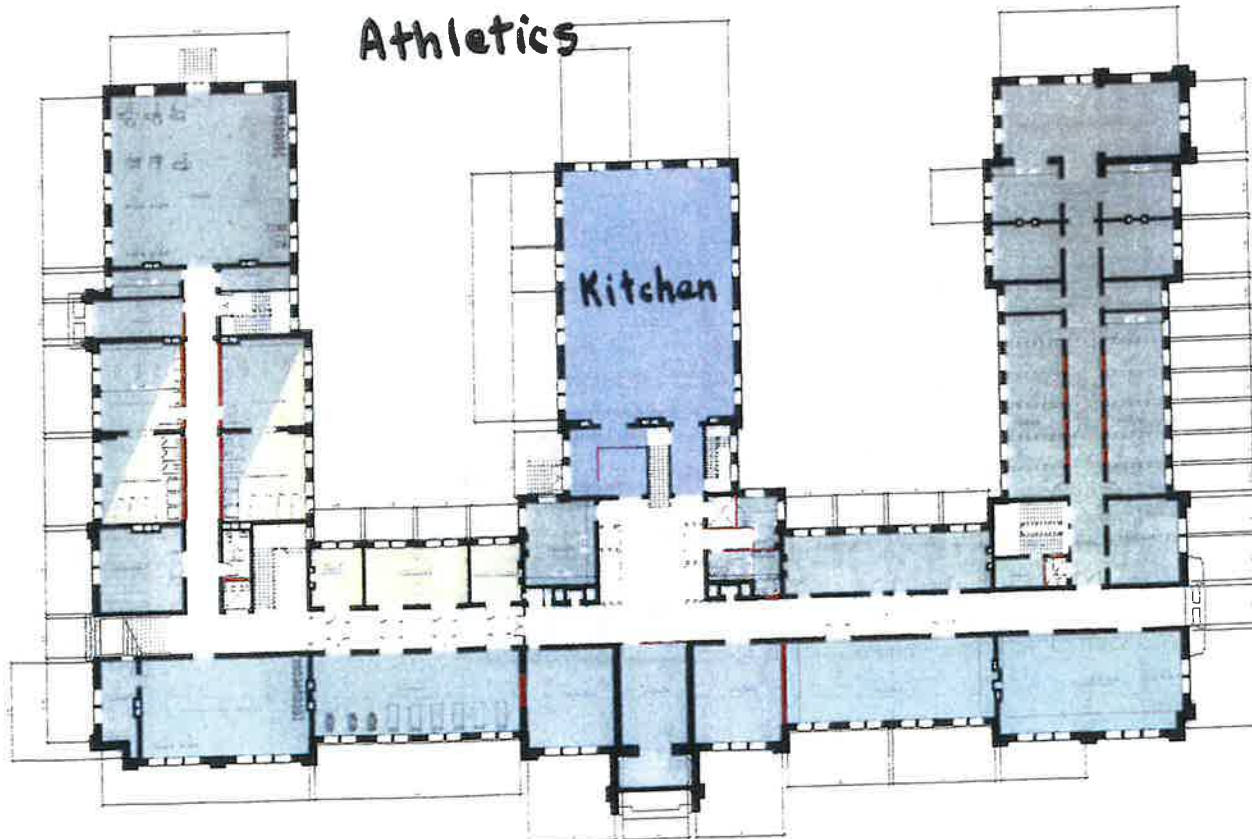
| Color  | Description               |
|--------|---------------------------|
| Blue   | PROPOSED CAFETERIA        |
| Green  | PROPOSED KITCHEN          |
| Yellow | PROPOSED YOUTH CENTER     |
| Red    | PROPOSED BASKETBALL COURT |
| Grey   | PROPOSED CORRIDOR         |
| White  | PROPOSED SERVICE AREA     |
| Black  | PROPOSED ENTRANCE         |

INCORPORATED VILLAGE  
OF GARDEN CITY

ST. PAULS

FIRST FLOOR PLAN  
ATHLETIC SCHEME

|                |                |
|----------------|----------------|
| Project Number | Project Number |
| Scale          | Scale          |
| Author         | Author         |
| Checker        | Checker        |
| A-101          |                |

PROGRESS  
DRAWINGS 2

| Color  | Description               |
|--------|---------------------------|
| Blue   | PROPOSED CAFETERIA        |
| Green  | PROPOSED KITCHEN          |
| Yellow | PROPOSED YOUTH CENTER     |
| Red    | PROPOSED BASKETBALL COURT |
| Grey   | PROPOSED CORRIDOR         |
| White  | PROPOSED SERVICE AREA     |
| Black  | PROPOSED ENTRANCE         |

INCORPORATED VILLAGE  
OF GARDEN CITY

ST. PAULS

LOWER LEVEL FLOOR PLAN  
PERFORMANCE ARTS  
SCHEME

|                |                |
|----------------|----------------|
| Project Number | Project Number |
| Scale          | Scale          |
| Author         | Author         |
| Checker        | Checker        |
| A-100          |                |



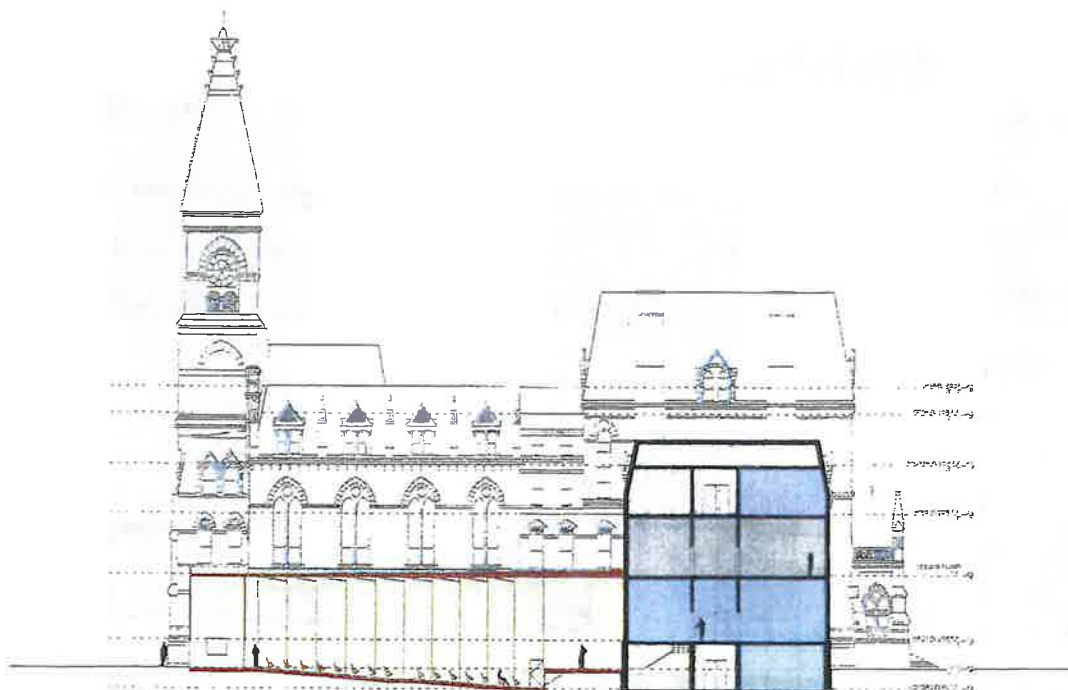


A-101

1750

A-201

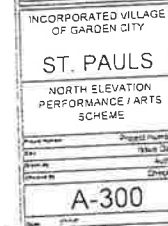
1998



A-201

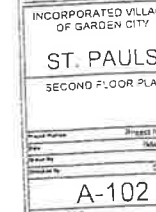
1998





## Performing Arts

### North Elevation





# Mayor's Committee on St. Paul's

## Adaptive Reuse Facts

Building is STRUCTURALLY SOUND as determined by the Inspection and Research of the Engineers and Architects

STONework, TILEWORK and IRONWORK

Entry, Grand Staircase and Chapel to be restored to original grandeur

Most of the building will undergo basic 'Clean, Polish and Repair' treatment

NEW WOOD and FLOOR JOISTS required in some areas

Majority of repairs are of INTERIOR nature to repair plaster walls and ceilings

Mild DEMO of existing not load bearing walls

FASCADE needs repointing, repair and stabilization

ABATEMENT

Minimal Asbestos based upon walk through/inspection by engineers

Lead Paint will be removed



St Paul's

handouts

10-12-22

## **STAY INFORMED & ASK QUESTIONS**

- **Website: [stpaulsreports.org](http://stpaulsreports.org)**
- **Instagram: [@stpaulsreports](https://www.instagram.com/stpaulsreports)**
- **Facebook: St Paul's Reports**
- **Email:  
[stpaulscomments@gardencityny.net](mailto:stpaulscomments@gardencityny.net)**

**When you email us, please address the specific Committee  
on the subject line and the Village  
will forward to the appropriate Chairperson:**

**General question, Architectural/Engineering, Legal,  
Finance, Adaptive ReUse (incl Use, Demo, Façade),  
Historical & Communications**

**THANK YOU FOR JOINING US!**

October 12, 2022





## ***Preserve the Past - Create the Future***

### **ADAPTIVE REUSE OF ST. PAUL'S**

Many of these programs already exist with limited space and need to expand.

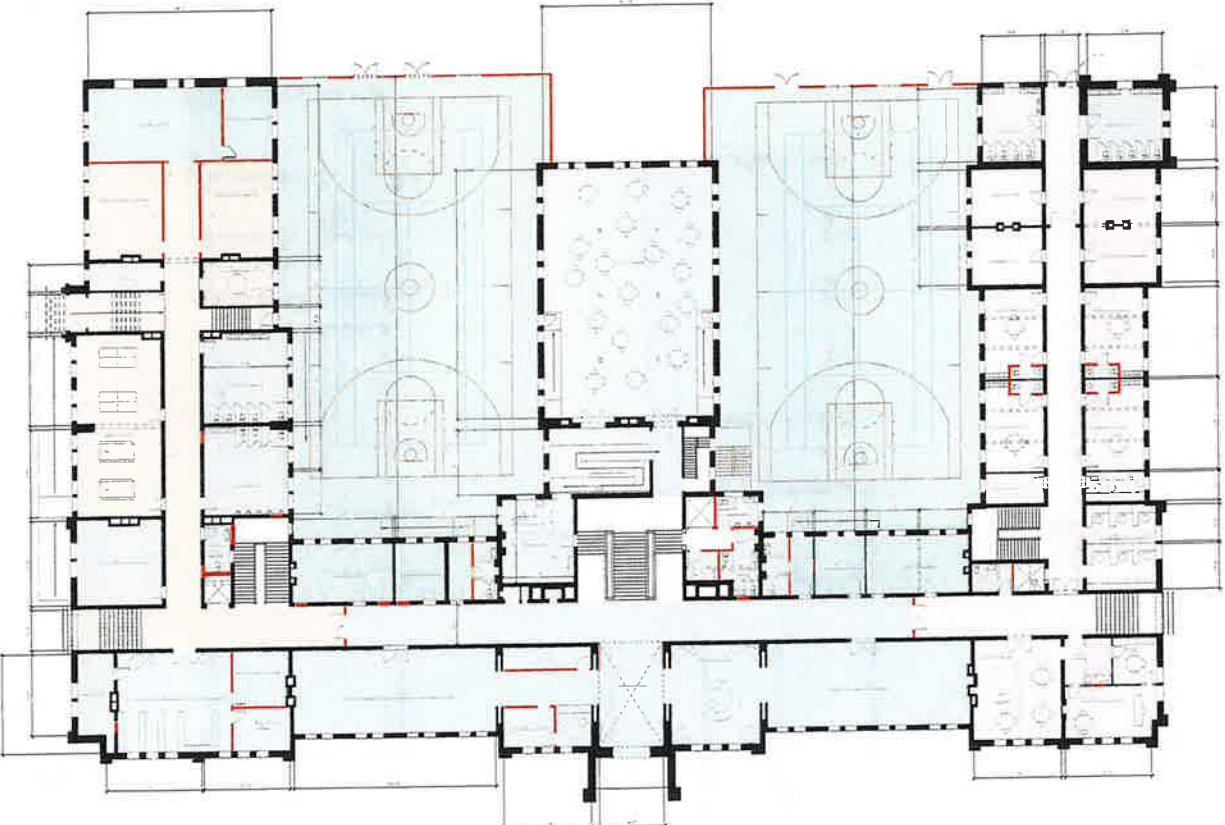
**If deprived of this opportunity – *where do they go?***

**If not at St. Paul's – *then where?***

|                                                                                                                                                                                                                                                                                                                                                                                                                                                    |                                                                                                                                                                                                                                                                                                                                                                                                                                                                                                                                                        |
|----------------------------------------------------------------------------------------------------------------------------------------------------------------------------------------------------------------------------------------------------------------------------------------------------------------------------------------------------------------------------------------------------------------------------------------------------|--------------------------------------------------------------------------------------------------------------------------------------------------------------------------------------------------------------------------------------------------------------------------------------------------------------------------------------------------------------------------------------------------------------------------------------------------------------------------------------------------------------------------------------------------------|
| <p><b><u>Community Center</u></b></p> <p><b>Multipurpose Flex Space</b></p> <p><b>Meeting Rooms</b></p> <p><b>Exhibition Space</b></p> <p><b>Reception/Event Space</b></p> <p><b>Coat Room/Security</b></p> <p><b>Teen Center</b></p> <p><b>Chapel:</b> non-denominational</p> <p><b>Culinary Space</b></p> <p><b>Play Space</b></p> <p><b>Quiet Room</b></p> <p><b>Garden City Research Area:</b><br/>Inclusive of Conference Room and Office</p> | <p><b><u>Athletics Programs</u></b></p> <p><b>Weight Training Room</b></p> <p><b>Cardio Training Room</b></p> <p><b>Exercise Rooms</b></p> <p><b>Yoga Room</b></p> <p><b>Pickle Ball Courts</b></p> <p><b>Storage Room</b></p> <p><b>Indoor Sports Space***</b></p> <p><b>Indoor Tennis Court(s)***</b></p> <p><b>Locker/Shower Rooms**</b></p> <p><b>Outdoor Turf Field*</b></p> <p><b>Sports Office</b></p> <p><b>Sports Assembly Room</b></p> <p>* Location TBD – see scale</p> <p>** Shared space with Performing Arts</p> <p>*** As an option</p> |
| <p><b><u>Performing Arts Center</u></b></p> <p><b>Theater 300+ seats***:</b><br/>Accommodating performances in dance,<br/>music, lectures, recitals, plays/musicals.</p> <p><b>Sound/Lighting/Storage</b></p> <p><b>Theater Storage/Stagecraft</b></p> <p><b>Ticket Booth</b></p> <p><b>Green Room</b></p>                                                                                                                                         | <p><b><u>Children's Center</u></b></p> <p><b>Admin Offices</b></p> <p><b>Children's Rooms</b></p> <p><b>Special Needs Room</b></p> <p><b>Dance Room</b></p> <p><b>Music Room</b></p> <p><b>Indoor Play Area</b></p>                                                                                                                                                                                                                                                                                                                                    |

|                                                                                                                                                                                                                                                                                                                                                                                           |                                                                    |
|-------------------------------------------------------------------------------------------------------------------------------------------------------------------------------------------------------------------------------------------------------------------------------------------------------------------------------------------------------------------------------------------|--------------------------------------------------------------------|
| <b>Locker Rooms**</b><br><b>** Shared space with Athletics</b><br><b>*** As an option.</b>                                                                                                                                                                                                                                                                                                | <b>Staff Space</b><br><b>Computer Stations</b>                     |
| <b><u>Department of Recreation</u></b><br><b>Admin/Reception</b><br><b>Arts/Crafts Studio</b><br><b>Painting Studios</b><br><b>Sculpture Studio</b><br><b>Science/Computer Labs</b><br><b>Robotics and Lego Rooms</b><br><b>Teen Game Room</b><br><b>Music Studios</b><br><b>Aerobic Studio</b><br><b>Dance/Movement Studios</b><br><b>Photography Studio</b><br><b>Filmmaking Studio</b> | <b><u>Events Garden Courtyard***</u></b><br><b>***As an option</b> |
| <b><u>Shared Facilities:</u></b><br><b>Mechanical, Electrical, Info Tech, Bathrooms, Elevators,</b><br><b>Storage, Ancillary, Culinary Support, Office of Emergency</b><br><b>Management (OEM), Area for Ambulance Staff Space and</b><br><b>Support Space During Emergencies.</b>                                                                                                        |                                                                    |

PROGRESS  
DRAWINGS 2



| Color        | Description        |
|--------------|--------------------|
| Light Blue   | Community Center   |
| Light Orange | Performance Center |
| Light Pink   | Youth Center       |
| Light Green  | Storage Room       |
| Light Yellow | Kitchen            |
| Light Purple | Restroom           |
| Light Brown  | Office             |

INCORPORATED VILLAGE  
OF GARDEN CITY  
**ST. PAULS**  
FIRST FLOOR PLAN  
ATHLETIC SCHEME

|                |                |
|----------------|----------------|
| Project Number | Project Number |
| Drawn          | Scale          |
| Checked        | Author         |
| Reviewed       | Checker        |
| Date           | 1/1/12         |

**A-101**

PROGRESS  
DRAWINGS 2



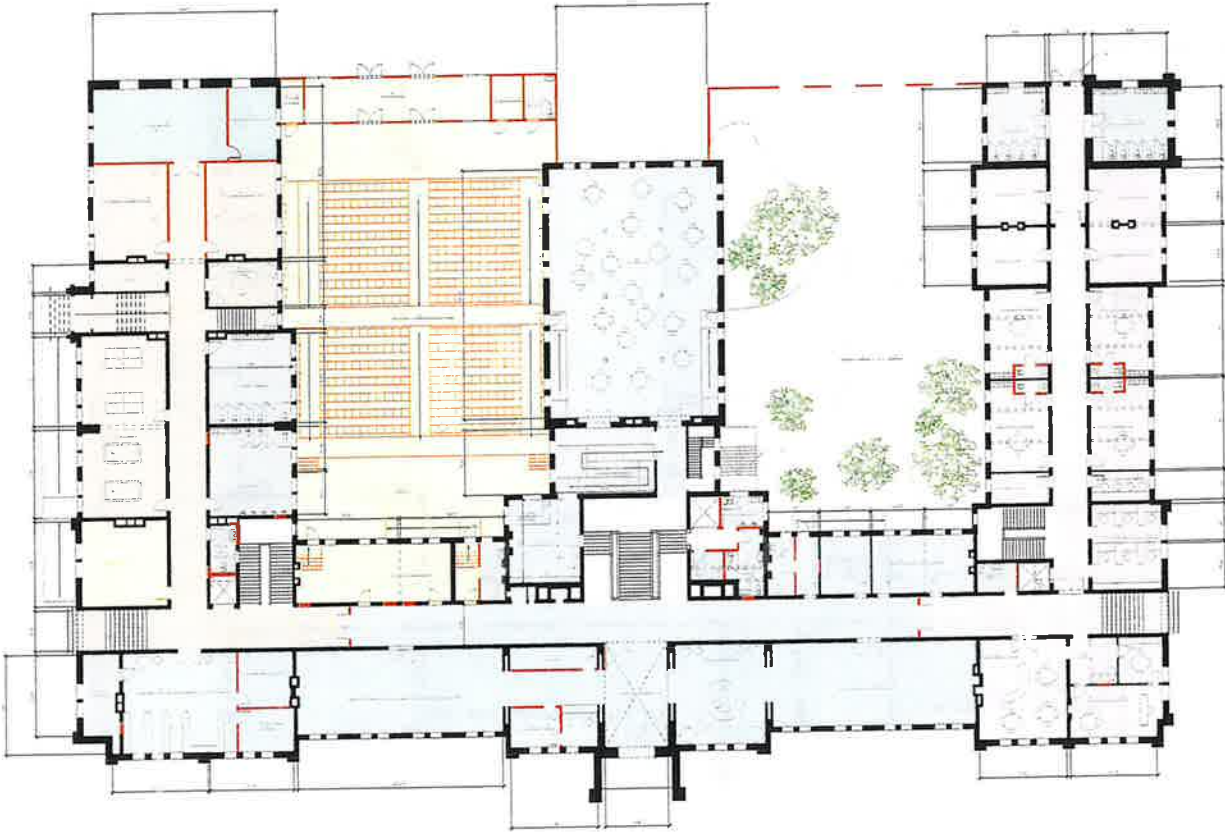
| Date | Description                   |
|------|-------------------------------|
|      | Working Drawing               |
|      | Performance Center            |
|      | AS/BOX                        |
|      | Storage (1.1M) (1.1M) (1.1M)  |
|      | Proposed (1.1M) (1.1M) (1.1M) |
|      | Existing (1.1M) (1.1M) (1.1M) |
|      | Existing (1.1M) (1.1M) (1.1M) |

INCORPORATED VILLAGE  
OF GARDEN CITY  
**ST. PAULS**  
LOWER LEVEL FLOOR PLAN  
ATHLETIC SCHEME

|                |                |
|----------------|----------------|
| Project Number | Project Number |
| Site           | Site           |
| Drawn By       | Drawn By       |
| Checked By     | Checked By     |

**A-100**

PROGRESS  
DRAWINGS 2



| Color      | Description           |
|------------|-----------------------|
| Yellow     | Community Center      |
| Orange     | Performance Center    |
| Light Blue | Youth Center          |
| White      | Storage/Utilities     |
| Red        | Proposed Construction |
| Green      | Existing Construction |

INCORPORATED VILLAGE  
OF GARDEN CITY

**ST. PAULS**

FIRST FLOOR PLAN  
PERFORMANCE / ARTS  
SCHEME

|                |              |
|----------------|--------------|
| Project Number | Sheet Number |
| Date           | Issue Date   |
| Drawn By       | Author       |
| Reviewed By    | Checker      |
| <b>A-101</b>   |              |
| Scale          | 1/8" = 1'-0" |



## PROGRESS DRAWINGS 2

[illegible]

INCORPORATED VILLAGE  
OF GARDEN CITY

ST. PAULS

LOWER LEVEL FLOOR PLAN  
PERFORMANCE / ARTS  
SCHEME

|                |                 |
|----------------|-----------------|
| Invoice Number | PTSD-1000000000 |
| Date           | Issue Date      |
| Drawn By       | Author          |
| Checked By     | Checker         |

A-100

Side 574E

PROGRESS  
DRAWINGS 2

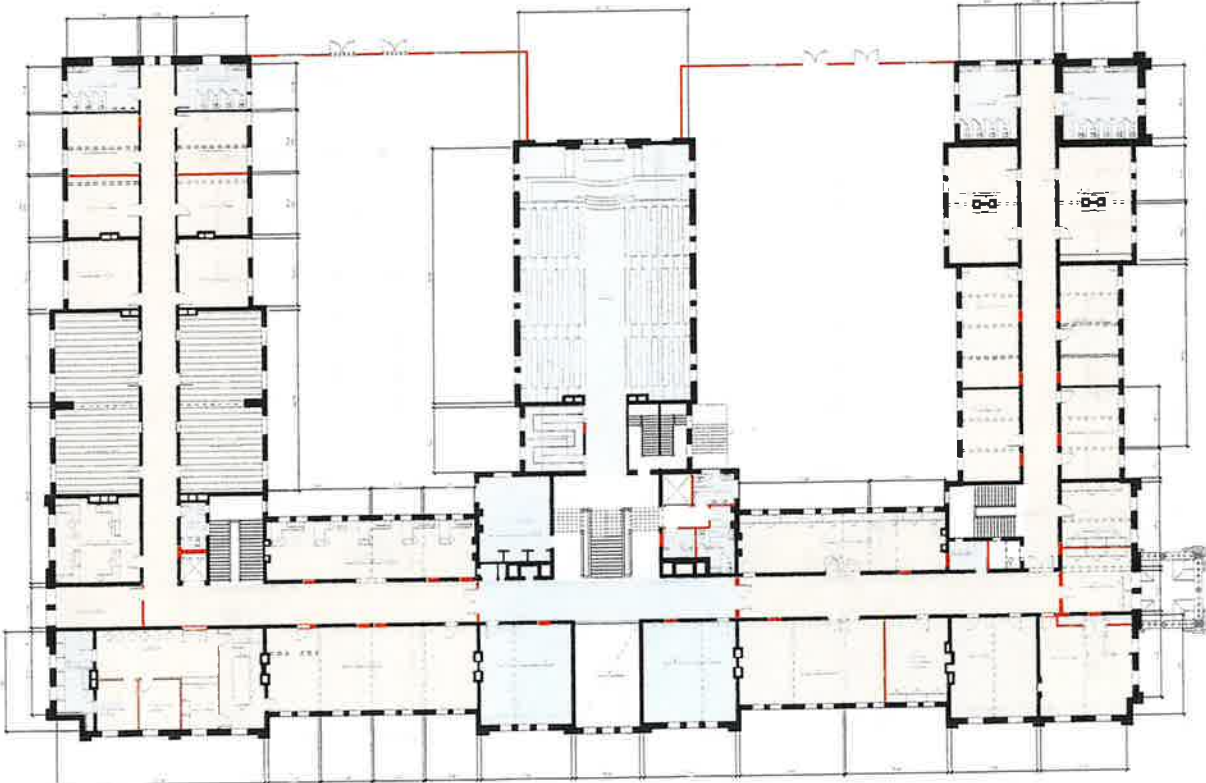
| Color | Description                  |
|-------|------------------------------|
|       | Community Center             |
|       | Department of Rehabilitation |
|       | Storage / Utilities          |
|       | Proposed Construction        |
|       | Existing Construction        |
|       | As Shown                     |

INCORPORATED VILLAGE  
OF GARDEN CITY  
**ST. PAULS**  
SECOND FLOOR PLAN

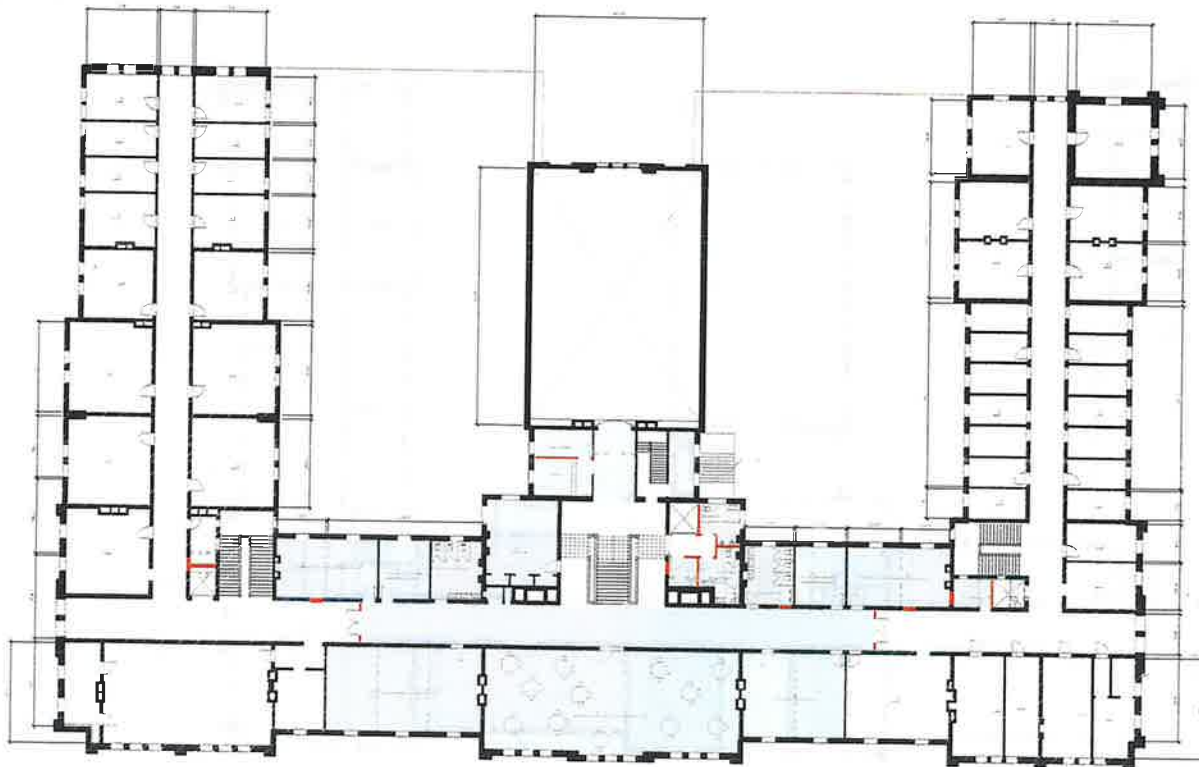
|                |                |
|----------------|----------------|
| Project Number | Project Number |
| Date           | Issue Date     |
| Drawn By       | Author         |
| Checked By     | Checker        |

A-102

Scale: 1/8" = 1'-0"



PROGRESS  
DRAWINGS 2



| Color | Description           |
|-------|-----------------------|
|       | Community Center      |
|       | Unfinished            |
|       | Storage / Unites      |
|       | Proposed Construction |
|       | Existing Construction |
|       | Demolition            |

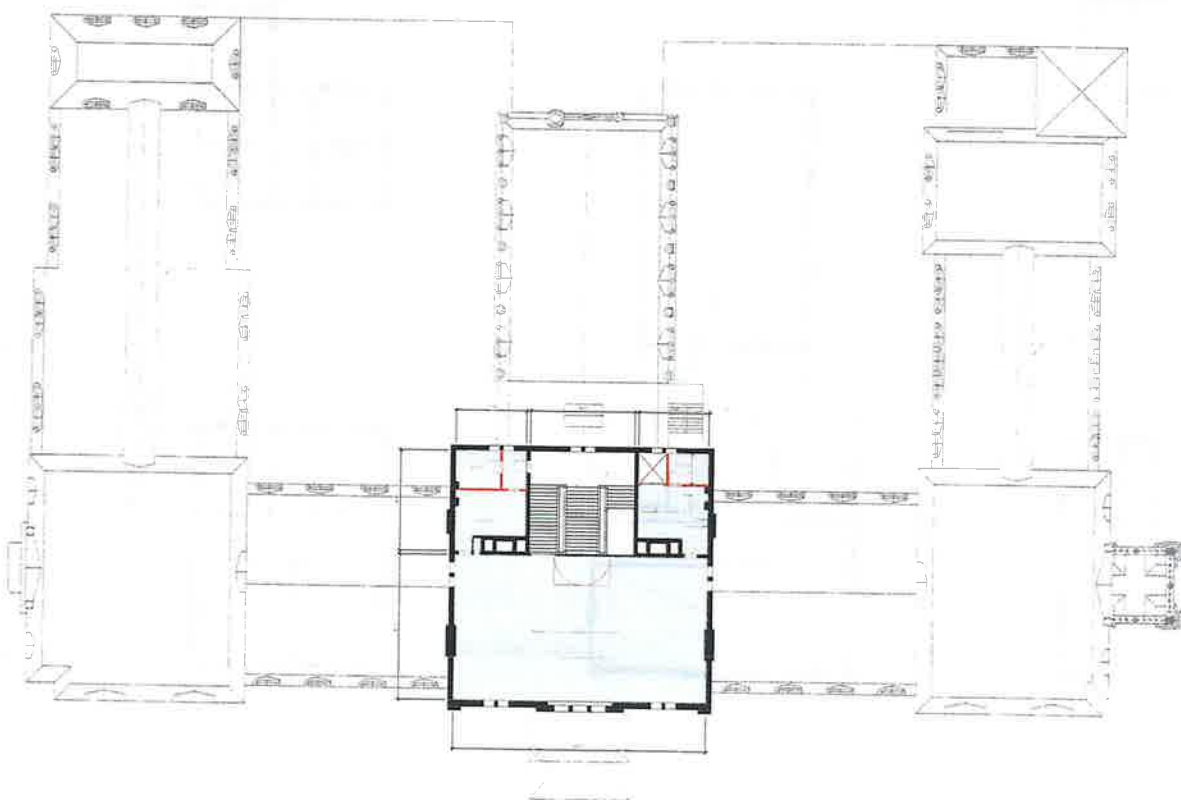
INCORPORATED VILLAGE  
OF GARDEN CITY  
**ST. PAULS**  
THIRD FLOOR PLAN

Sheet Number: 1000000000  
Date: 10/1/2010  
Drawing: 1000000000  
Project No: 1000000000  
Author: 1000000000  
Checker: 1000000000  
**A-103**  
Title: 1000000000

This architectural floor plan depicts a complex building layout with several interconnected volumes. The central part of the plan features a large rectangular space with a prominent 'X' structure, possibly a central atrium or a large hall. To the left of this central area is a large, irregularly shaped volume containing a staircase and a small room. To the right is another large volume with a staircase and a small room. Further to the right, there is a smaller, more complex structure with multiple rooms and a staircase. The plan includes numerous dimensions, room numbers, and structural details such as walls, doors, and stairs. A north arrow is located in the upper right corner of the plan.

Project Number: \_\_\_\_\_ Project Name: \_\_\_\_\_  
Date: \_\_\_\_\_ Issue Date: \_\_\_\_\_  
Drawn By: \_\_\_\_\_ AutoCAD: \_\_\_\_\_  
Checked By: \_\_\_\_\_  
**A-104**  
Scale: 1/8" = 1'-0"

**PROGRESS  
DRAWINGS 2**



| Color        | Description    |
|--------------|----------------|
| Light Blue   | Common Area    |
| Light Green  | Storage Room   |
| Light Yellow | Private Office |
| Light Purple | Public Office  |
| Light Red    | Corridor       |

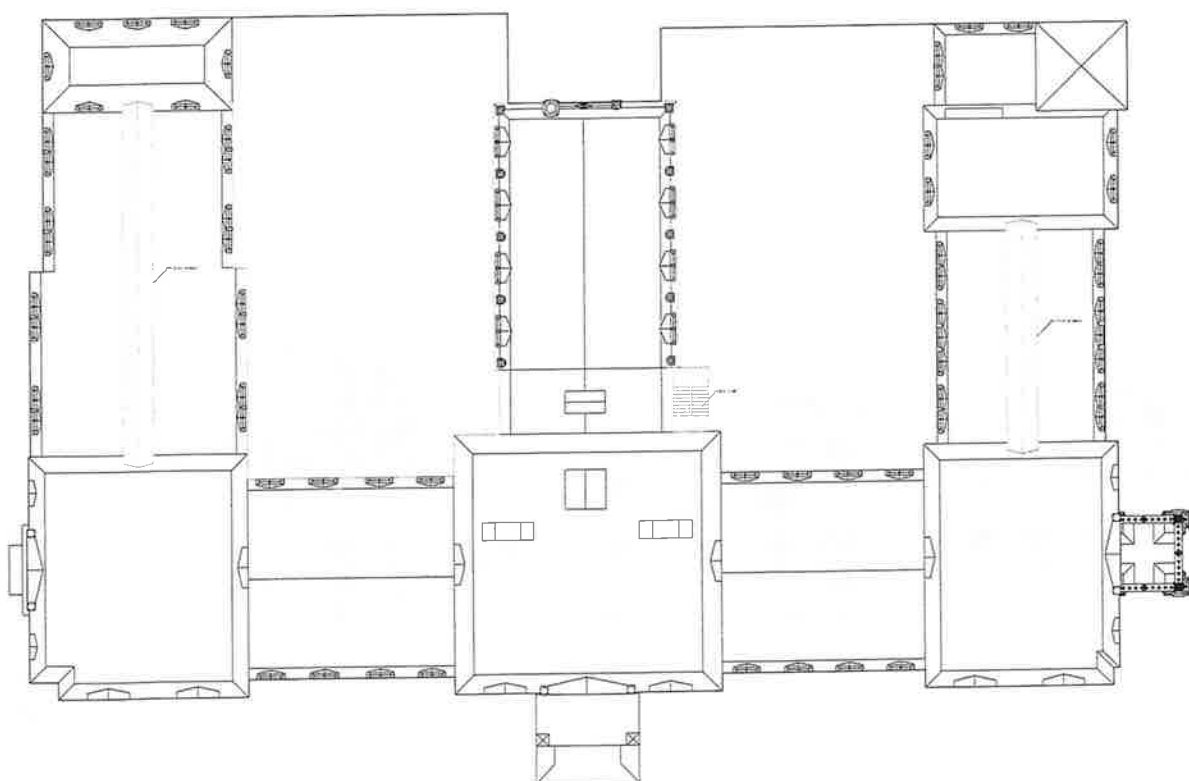
INCORPORATED VILLAGE  
OF GARDEN CITY  
**ST. PAULS**  
FIFTH FLOOR PLAN

|                |                |
|----------------|----------------|
| Project Number | Project Number |
| Drawn By       | Drawn By       |
| Check By       | Check By       |
| Scale          | Scale          |

**A-105**



## PROGRESS DRAWINGS 2

[illegible]

INCORPORATED VILLAGE  
OF GARDEN CITY

ST. PAULS

ROOF PLAN

|              |                |
|--------------|----------------|
| Grant Number | Project Number |
| Site         | Issue Code     |
| Created By   | Auth           |
| Checked By   | Check          |

A-106

104

[illegible]

NORTH ELEVATION  
ATHLETIC SCHEME

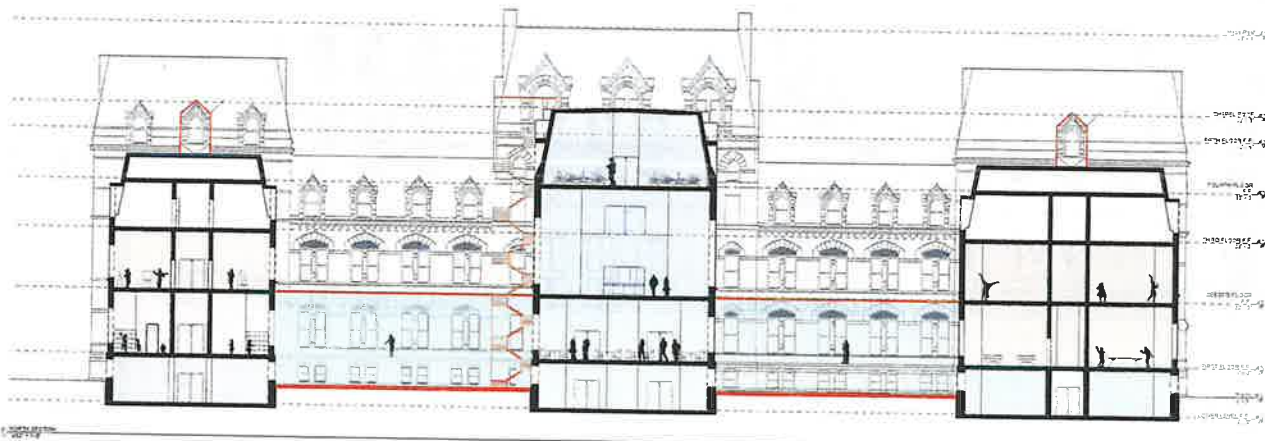
|                |        |
|----------------|--------|
| Project Number |        |
| Date           |        |
| Check No.      |        |
| Amount By      | Checks |

A-300

|      |         |
|------|---------|
| Days | 4/11/07 |
|------|---------|



# PROGRESS DRAWINGS 2



| Color | Description                   |
|-------|-------------------------------|
|       | Community Center              |
|       | Performance Center            |
|       | Atrium                        |
|       | Youth Center                  |
|       | Department of Recreation      |
|       | Storage / Utility / Emergency |
|       | Staircase                     |
|       | Proposed Gymnasium            |
|       | Existing Construction         |

INCORPORATED VILLAGE  
OF GARDEN CITY

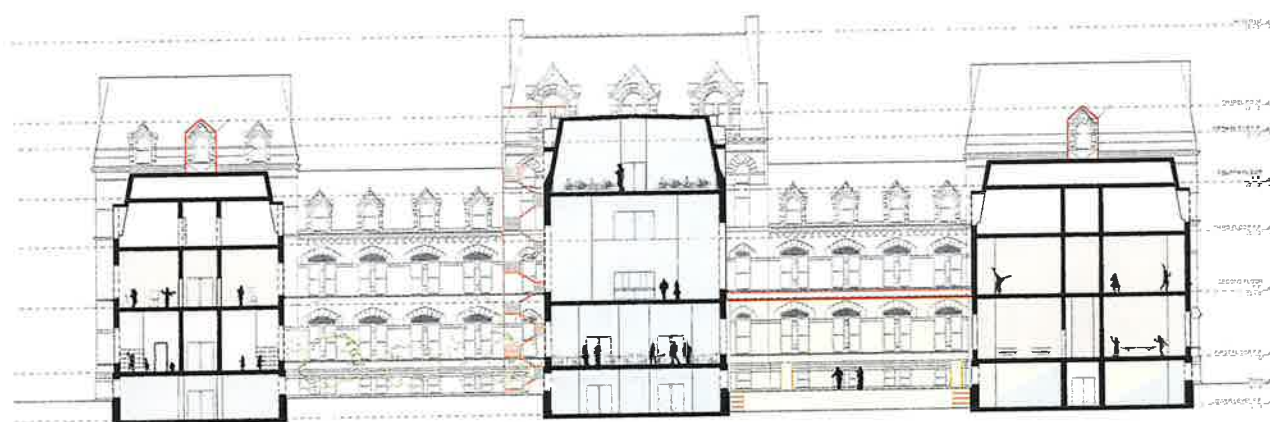
ST. PAULS

NORTH SECTION  
ATHLETIC SCHEME

|                |                |
|----------------|----------------|
| Project Number | Project Number |
| Date           | Issue Date     |
| Drawn By       | Author         |
| Checked By     | Checker        |

A-200

## PROGRESS DRAWINGS 2



| Color | Description                     |
|-------|---------------------------------|
|       | Community Center                |
|       | Practitioner Center             |
|       | Athletics                       |
|       | YOUTH Center                    |
|       | Department of Recreation        |
|       | Storage / Utilities / Emergency |
|       | LOCKER ROOM                     |
|       | IMPROVED CONSTRUCTION           |
|       | EXISTING CONSTRUCTION           |

INCORPORATED VILLAGE  
OF GARDEN CITY

**ST. PAULS**  
NORTH SECTION  
PERFORMANCE / ARTS  
SCHEME

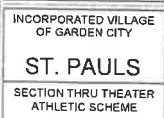
|              |                |
|--------------|----------------|
| Trace Number | Project Number |
| Date         | Issue Date     |
| Owner ID     | Auth           |
| Checked By   | Order          |

A-200

Page 571P



| Color | Description              |
|-------|--------------------------|
|       | Community Center         |
|       | APR 1994                 |
|       | Department of Recreation |
|       | Unassigned               |
|       | Proposed Construction    |
|       | Existing Construction    |



A-201

This architectural drawing shows the elevation and section of the building. The elevation on the left features a tall, ornate tower with a spire, arched windows, and decorative stonework. The main body of the building has a series of arched windows and a flat roof. A section cut on the right shows the internal structure, including a large hall with a high ceiling and a smaller room below. The drawing is detailed with lines indicating structural elements and materials.

INCORPORATED VILLAGE  
OF GARDEN CITY

ST. PAULS  
SECTION THRU THEATRE  
PERFORMANCE / ARTS  
SCHEME

|                |              |
|----------------|--------------|
| Project Number | Project Name |
| Date           | Issue Date   |
| Drawn By       | Auto         |
| Checked By     | Chen         |
| A-201          |              |
| Scale          | 1:1          |

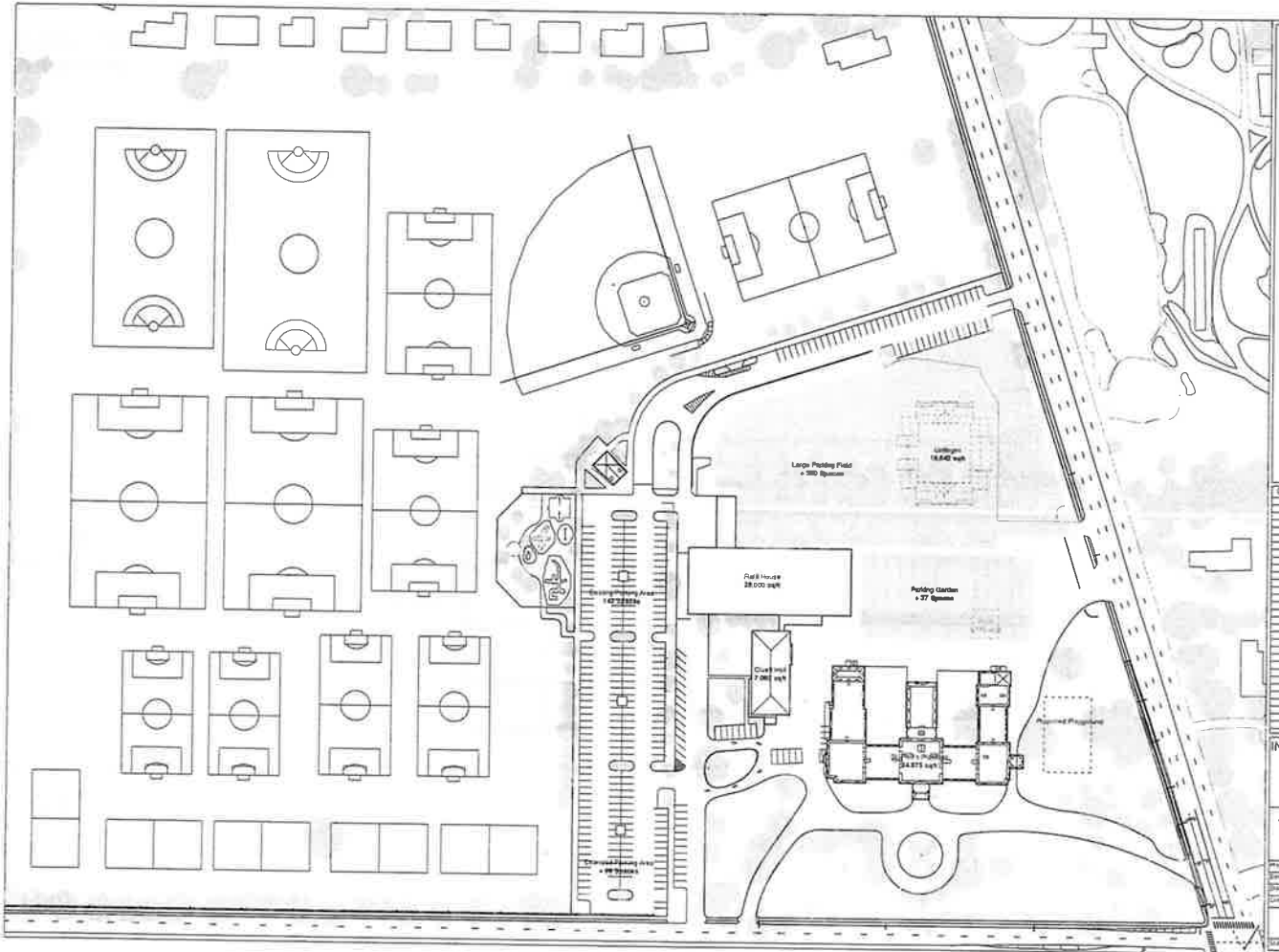
[illegible]

INCORPORATED VILLAGE  
OF GARDEN CITY

**ST. PAULS**

PROPOSED PLOT PLAN  
OPTION 3

|                |     |
|----------------|-----|
| Product Number |     |
| Size           |     |
| Drawn By       |     |
| Checked By     |     |
| <b>G-001</b>   |     |
| Scale          | 1:1 |





[illegible]

**PROPOSED PLOT PLAN**  
**OPTION 2**

|                     |  |
|---------------------|--|
| Project Name        |  |
| Date                |  |
| Created By          |  |
| Revised By          |  |
| G-001               |  |
| Title: <i>Blank</i> |  |