

1
2

TRP-06 PLANT SCHEDULE						
KEY	QTY	BOTANICAL / COMMON NAME	BALL	SIZE	SPACING	REMARKS
FGMA	21	FORTHERGILLA GARDENII 'MT. AIRY' / MT. AIRY DWARF FORTHERGILLA	CONT.	3 GALLON	3' O.C.	24" - 30" HT.
IGS	27	ILEX GLABRA 'SHAMROCK' / SHAMROCK INKBERRY	CONT.	3 GALLON	3' O.C.	30" - 36" HT.
ILOJP	5	ILEX OPACA 'JERSEY PRINCESS' / JERSEY PRINCESS AMERICAN HOLLY	B&B	8-10' HT.	8' O.C.	FULL TO BASE
LISR	4	LIQUIDAMBAR STYRACIFLUA 'ROTUNDILOBA'/SEEDLESS SWEETGUM	B&B	25'-30' HT.	AS SHOWN	CENTRAL LEADER
NRBW	126	NEPETA RACEMOSA 'BLUE WONDER' / BLUE WONDER CATMINT	CONT.	1 GALLON	18" O.C.	
PLS	25	PRUNUS LAUROCERASUS 'SCHIPKAENSIS' / SKIP LAUREL	B&B/CONT.	8' HT.	4' O.C.	
QUA	4	QUERCUS ALBA / WHITE OAK	B&B	25'-30' HT.	AS SHOWN	CENTRAL LEADER
TGG	25	THUJA 'GREEN GIANT' / GREEN GIANT ARBORVITAE	B&B	8-10' HT.	8' O.C.	FULL TO BASE
THOS	10	THUJA OCCIDENTALIS 'SMARAGD' / EMERALD GREEN ARBORVITAE	B&B	8-10' HT.	4' O.C.	FULL TO BASE
TIC	6	TILIA CORDATA / LITTLE LEAF LINDEN	B&B	25'-30' HT.	AS SHOWN	CENTRAL LEADER

PLANT BED / PLANT PIT CONSTRUCTION:

1. PLANT MATERIALS AND PLANTING ACTIVITIES, TOPSOIL, AND LANDSCAPE MATERIAL WILL CONFORM TO SPECIFICATION 3TC 32 93 00 EXTERIOR PLANTS REV 1.
2. NOTE: RETAINING WALLS HAVE 3' WIDTH GRAVEL DRAINAGE AT WALL BASE TYPICAL (EXCLUDES SOUND-WALLS). REPLACE SURFACE GRAVEL WITH 1'-6" TOPSOIL AT PLANT BEDS DIRECTLY ADJACENT TO RETAINING WALLS.
3. DETERMINE CONFIGURATION OF PLANT BED PER PLAN. REMOVE UNDESIRABLE VEGETATION BY APPLYING NON-SELECTIVE HERBICIDE AT LEAST 14 DAYS PRIOR TO PLANT INSTALLATION OR BY MANUAL VEGETATION REMOVAL. CUT OR MOW DEAD VEGETATION TO A HEIGHT OF 1 INCH AND REMOVE THE DEBRIS.
4. ROTO-TILL THE SOIL OF THE BED TO A DEPTH OF 6 IN. TO THOROUGHLY MIX 4 INCHES OF TOPSOIL, COMPOST AND SPECIFIED FERTILIZER OR SOIL AMENDMENT INTO THE SOIL. REMOVE DEBRIS, STONES AND SOIL CLOD WITH A LENGTH OR WIDTH GREATER THAN 4 INCHES THAT ARE UNCOVERED DURING ROTO-TILLING.
5. DO NOT ROTO-TILL ON SLOPES 3:1 AND STEEPER. DO NOT ROTO-TILL IN BIORETENTION AREAS.

PREPARING PLATING PITS:

1. REMOVE UNDESIRABLE VEGETATION BY APPLYING NON-SELECTIVE HERBICIDE AT LEAST 14 DAYS PRIOR TO PLANT INSTALLATION OR BY MANUAL VEGETATION REMOVAL. CUT AND REMOVE DEAD VEGETATION OR DEBRIS THAT INTERFERES WITH SOIL PREPARATION PLANT INSTALLATION OR FUTURE MAINTENANCE.
2. EXCAVATE PLANTING PITS TO THE DEPTH REQUIRED FOR PLACEMENT OF ROOT COLLARS PER SOIL CONDITION BELOW; RETAIN THE EXCAVATED SOIL FOR PREPARATION AS BACKFILL SOIL.
 - A. NORMAL, WELL DRAINED SOILS, PLACE COLLAR AT 1 INCH ABOVE AVERAGE SURFACE GRADE.
 - A. COMPACTED SOILS, PLACE COLLAR AT 1 TO 2 INCHES ABOVE AVERAGE SURFACE GRADE.
 - B. POORLY DRAINED OR WET SOILS, PLACE COLLAR AS NEEDED TO ENSURE 25% OF ROOT MASS IS ABOVE SURFACE GRADE.
- C. PIT DIAMETER SHALL BE TWICE THE SIZE OF THE CONTAINER OR ROOT BALL.
3. MIX COMPOST INTO THE BACKFILL SOIL AS SPECIFIED IN CONTRACT DOCUMENTS.

PLANT INSTALLATION:

1. INSTALL PLANTS VERTICALLY IN PLANTING PITS AND BEDS AS SHOWN ON PLAN.
2. REMOVE CONTAINERS, SYNTHETIC FABRIC, PLASTIC, WIRE BASKETS, AND METAL CONTAINERS BEFORE PLANT INSTALLATION. REMOVE TWINE AND NATURAL BURLAP FORM THE TOPS OF ROOTBALLS TO A DEPTH OF 6 INCHES BELOW THE SURFACE OF THE BACKFILL PLANTING PIT.
3. CAREFULLY REMOVE THE CONTAINERS OF CONTAINER-GROWN PLANTS AND LOOSEN THE SOIL MASS TO ELIMINATE GIRDLING ROOTS. SCORE ROOT BALL WHEN ROOTS ARE MASSES.
4. PLACE BACKFILL SOIL AROUND ROOTS TO STABILIZE PLANTS IN UPRIGHT POSITION AND RESTORE THE GRADE. LIGHTLY COMPACT BACKFILL SOIL TO REDUCE AIR POCKETS. AVOID EXCESSIVE COMPACTION OF BIORETENTION SOIL MIXTURE.

SOIL BERMING

FORM BERM AROUND ENTIRE PLANT PIT ON AREAS FLATTER THAN 4:1. ON SLOPES 4:1 AND STEEPER, TAKE SOIL FROM THE UPSLOPE RIM OF THE PIT AND PLACE IT ON THE DOWNSLOPE RIM TO FORM THE BERM.

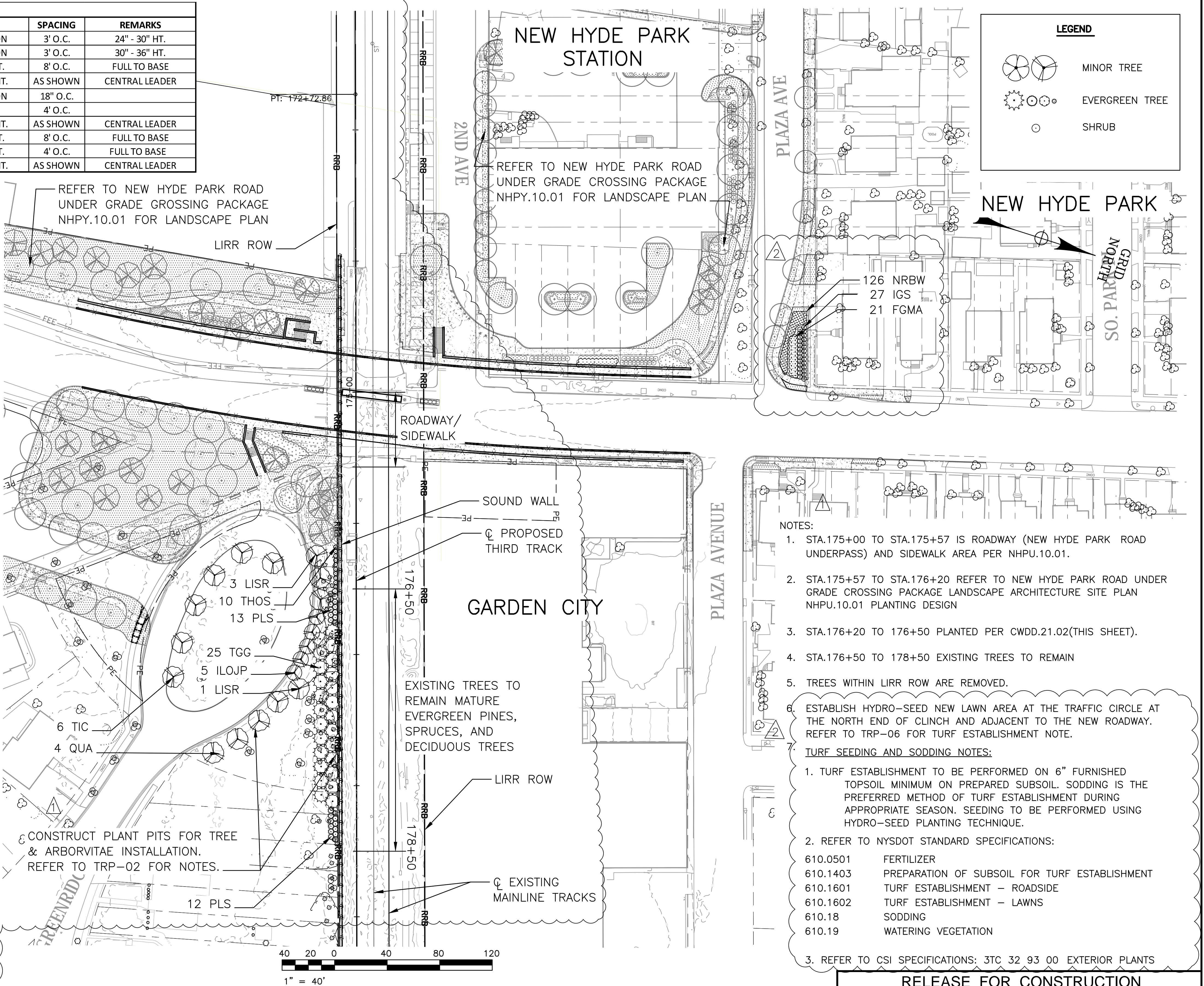
MULCHING

1. SPREAD SHREDDED HARDWOOD BARK MULCH UNIFORMLY OVER THE SOIL SURFACE TO A 3 INCH DEPTH THE SAME DAY THAT PLANTS ARE INSTALLED.
2. COVER THE SOIL OF THE PLANTING PIT TO ITS OUTSIDE EDGE, INCLUDING SOIL BERM. DO NOT ALLOW MULCH TO TOUCH THE BARK OR MAIN STEM OF THE PLANT.
3. PLACE SHREDDED HARDWOOD BARK MULCH IN PLANT BEDS. MULCH MAY BE SPREAD BEFORE OR AFTER INSTALLING PLANTS. SPREAD MULCH OVER ENTIRE BED AND RAKE IT TO AN EVEN SURFACE, INCLUDING BERMS AND SHOULDERS. ENSURE THAT MULCH DOES NOT COVER PLANTS.

NOTE: ALL STATIONS TO BE MULCHED WITH DECORATIVE RIVER STONE MULCH, 2"-3" STONE, EARTH TONES (BROWNS, TANS, & GRAYS), 5" DEPTH ON A HEAVY DUTY PROTECTIVE WEED BARRIER FABRIC UNLESS OTHERWISE NOTED. REFER TO NYSDOT SPECIAL SPECIFICATIONS:

610.11940609 DECORATIVE STONE MULCH

NURSERY SUPPLY: PLANT SPECIES AND SELECTION IS CONTINGENT ON NURSERY AVAILABILITY.



File Name: trp-06-stn-plt.dwg Plotter: October 08, 2020 VTCS:gm by: mskm

				DESIGNED BY: M. KIM
				DRAWN BY: W. SAVOY
				CHECKED BY: K. DAHILL
				APPROVED BY: M. BOCAMAZO
2	10/26/20	NDC455	KRD	
1	01/31/20	NDC278	KRD	
NO.	DATE	DESCRIPTION	APP'D	

 Long Island Rail Road

 **3rd TRACK CONSTRUCTORS**
Picone | DragadosUSA | CCA Civil | Halmar

 **Stantec**

LIRR EXPANSION PROJECT FROM
FLORAL PARK TO HICKSVILLE


IT IS A VIOLATION OF SECTION 2209.2 OF THE NEW YORK STATE EDUCATION LAW FOR ANY PERSON, UNLESS ACTING UNDER THE DIRECTION OF A LICENSED PROFESSIONAL ENGINEER, TO ALTER IN ANY WAY PLANS, SPECIFICATIONS, PLATS OR REPORTS TO WHICH THE SEAL OF A PROFESSIONAL ENGINEER HAS BEEN APPLIED. IF AN ITEM BEARING THE SEAL OF A PROFESSIONAL ENGINEER IS ALTERED THE ALTERING ENGINEER SHALL AFFIX TO THE ITEM HIS SEAL AND THE NOTATION "ALTERED BY" FOLLOWED BY HIS SIGNATURE, THE DATE, AND A SPECIFIC DESCRIPTION OF THE ALTERATION.

CORRIDOR WIDE TREE RESTORATION

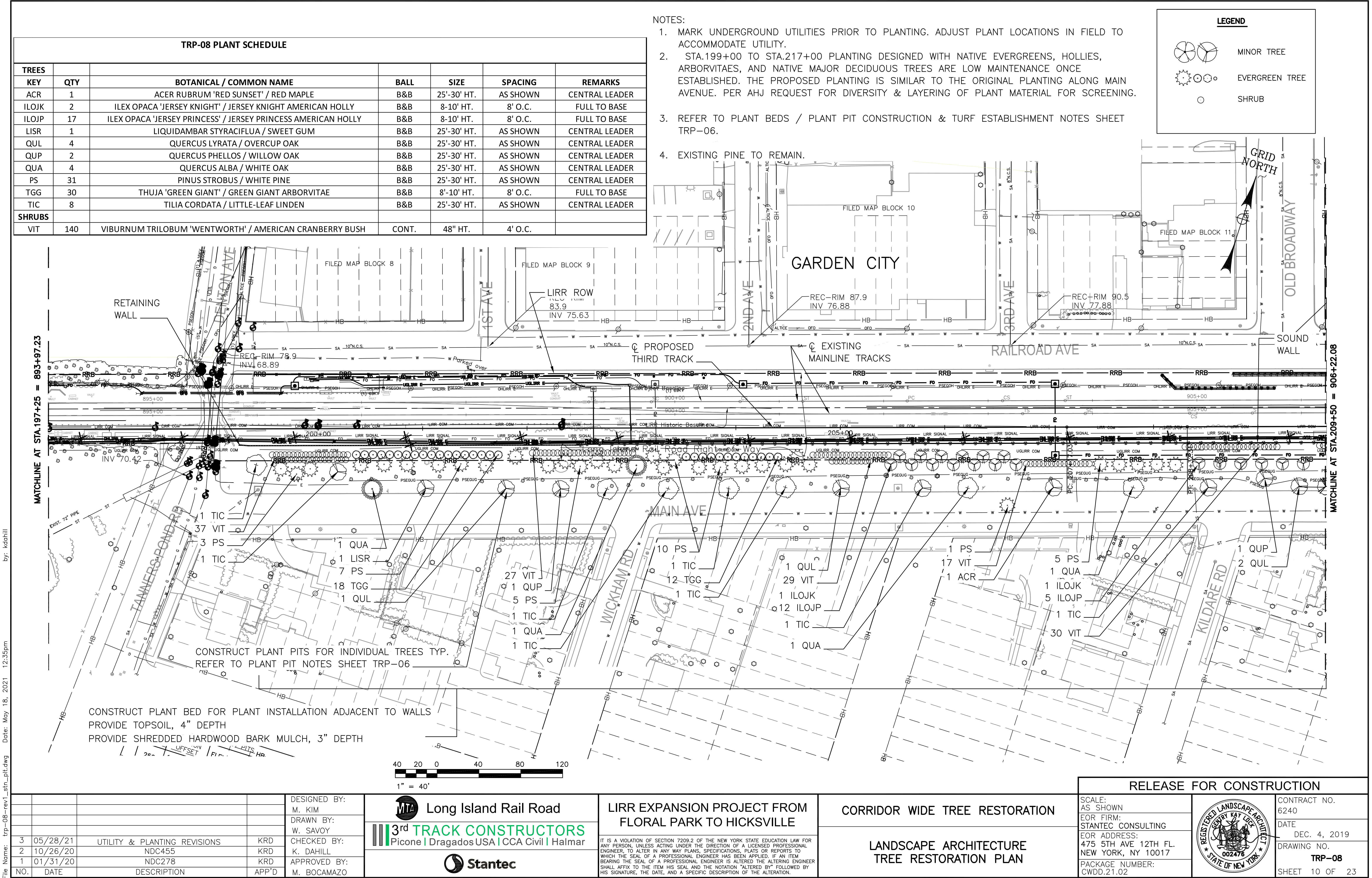
LANDSCAPE ARCHITECTURE
TREE RESTORATION PLAN

RELEASE FOR CONSTRUCTION

SCALE:
AS SHOWN
EOR FIRM:
STANTEC CONSULTING
EOR ADDRESS:
475 5TH AVE 12TH FL.
NEW YORK, NY 10017
PACKAGE NUMBER:
CWDD.21.02



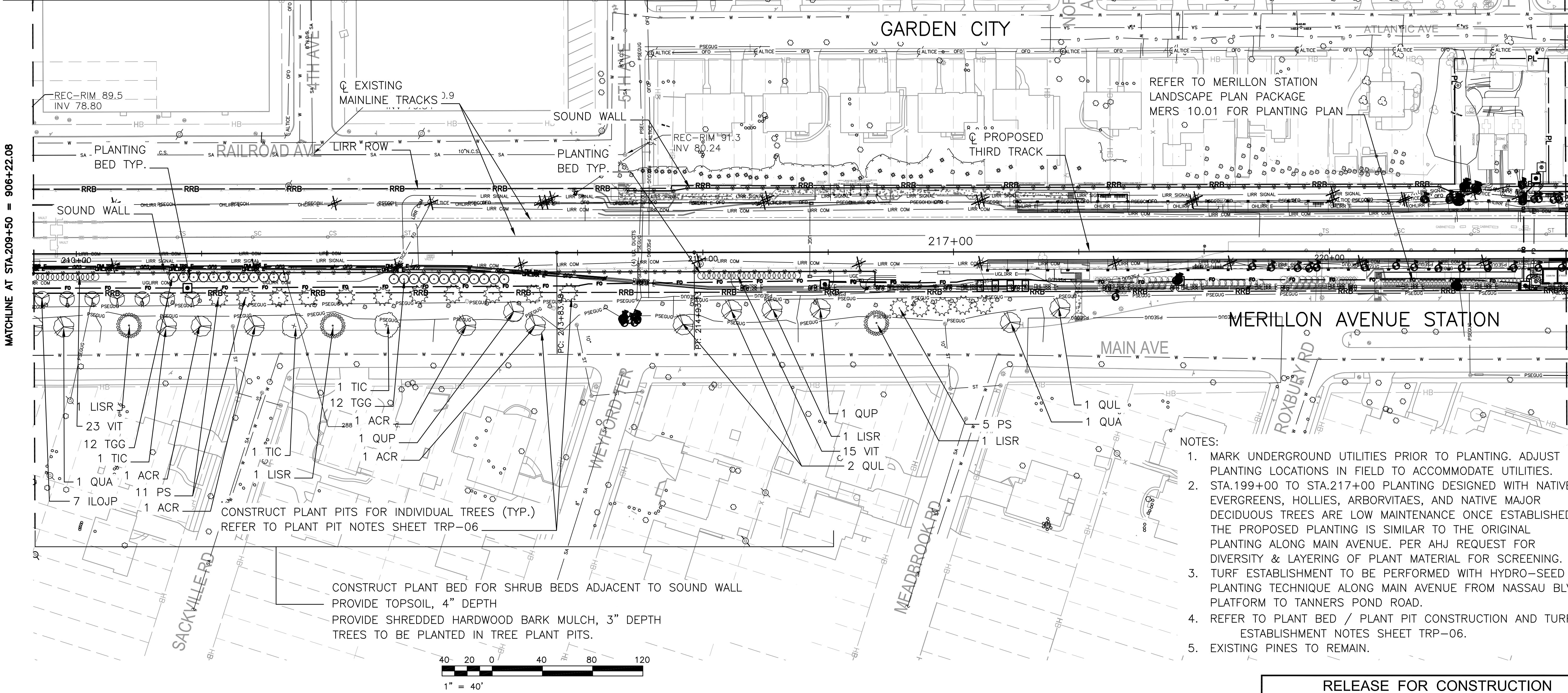
CONTRACT NO.
6240
DATE
DEC. 4, 2019
DRAWING NO.
TRP-06
SHEET 08 OF 23



MATCHLINE AT STA.209+50 = 906+22.08

MATCHLINE AT STA.221+75 = 918+47.08

TRP-09 PLANT SCHEDULE						
TREES						
KEY	QTY	BOTANICAL / COMMON NAME	BALL	SIZE	SPACING	REMARKS
ACR	4	ACER RUBRUM 'RED SUNSET' / RED MAPLE	B&B	25'-30' HT.	AS SHOWN	CENTRAL LEADER
ILOJP	7	ILEX OPACA 'JERSEY PRINCESS' / JERSEY PRINCESS AMERICAN HOLLY	B&B	8'-10' HT.	8' O.C.	FULL TO BASE
LISR	4	LIQUIDAMBAR STYRACIFLUA / SWEET GUM	B&B	25'-30' HT.	AS SHOWN	CENTRAL LEADER
QUL	3	QUERCUS LYRATA / OVERCUP OAK	B&B	25'-30' HT.	AS SHOWN	CENTRAL LEADER
QUP	2	QUERCUS PHELLOS / WILLOW OAK	B&B	25'-30' HT.	AS SHOWN	CENTRAL LEADER
QUA	2	QUERCUS ALBA / WHITE OAK	B&B	25'-30' HT.	AS SHOWN	CENTRAL LEADER
PS	16	PINUS STROBUS / WHITE PINE	B&B	25'-30' HT.	AS SHOWN	CENTRAL LEADER
TGG	24	THUJA 'GREEN GIANT' / GREEN GIANT ARBORVITAE	B&B	8'-10' HT.	12' O.C.	FULL TO BASE
TIC	3	TILIA CORDATA / LITTLE-LEAF LINDEN	B&B	25'-30' HT.	AS SHOWN	CENTRAL LEADER
SHRUBS						
VIT	38	VIBURNUM TRILOBUM 'WENTWORTH' / AMERICAN CRANBERRY BUSH	CONT.	48" HT.	4'O.C.	



- NOTES:
1. MARK UNDERGROUND UTILITIES PRIOR TO PLANTING. ADJUST PLANTING LOCATIONS IN FIELD TO ACCOMMODATE UTILITIES.
 2. STA.199+00 TO STA.217+00 PLANTING DESIGNED WITH NATIVE EVERGREENS, HOLLIES, ARBORVITAE, AND NATIVE MAJOR DECIDUOUS TREES ARE LOW MAINTENANCE ONCE ESTABLISHED. THE PROPOSED PLANTING IS SIMILAR TO THE ORIGINAL PLANTING ALONG MAIN AVENUE. PER AHJ REQUEST FOR DIVERSITY & LAYERING OF PLANT MATERIAL FOR SCREENING.
 3. TURF ESTABLISHMENT TO BE PERFORMED WITH HYDRO-SEED PLANTING TECHNIQUE ALONG MAIN AVENUE FROM NASSAU BLVD PLATFORM TO TANNERS POND ROAD.
 4. REFER TO PLANT BED / PLANT PIT CONSTRUCTION AND TURF ESTABLISHMENT NOTES SHEET TRP-06.
 5. EXISTING PINES TO REMAIN.

				DESIGNED BY: M. KIM
				DRAWN BY: W. SAVOY
				CHECKED BY: K. DAHILL
				APPROVED BY: M. BOCAMAZO
3	05/28/21	UTILITY AND PLANTING REVISIONS	KRD	
2	10/26/20	NDC455	KRD	
1	01/31/20	NDC278	KRD	
NO.	DATE	DESCRIPTION	APP'D	

 Long Island Rail Road

 3rd TRACK CONSTRUCTORS
Picone | DragadosUSA | CCA Civil | Halmar

 Stantec

LIRR EXPANSION PROJECT FROM
FLORAL PARK TO HICKSVILLE

IT IS A VIOLATION OF SECTION 7209.2 OF THE NEW YORK STATE EDUCATION LAW FOR ANY PERSON, UNLESS ACTING UNDER THE DIRECTION OF A LICENSED PROFESSIONAL ENGINEER, TO ALTER IN ANY WAY PLANS, SPECIFICATIONS, PLATS OR REPORTS TO WHICH THE SEAL OF A PROFESSIONAL ENGINEER HAS BEEN APPLIED. IF AN ITEM BEARING THE SEAL OF A PROFESSIONAL ENGINEER IS ALTERED, THE ALTERING ENGINEER SHALL AFFIX TO THE ITEM HIS SEAL AND THE NOTATION "ALTERED BY" FOLLOWED BY HIS SIGNATURE, THE DATE, AND A SPECIFIC DESCRIPTION OF THE ALTERATION.

CORRIDOR WIDE TREE RESTORATION

LANDSCAPE ARCHITECTURE
TREE RESTORATION PLAN


RELEASE FOR CONSTRUCTION

SCALE:
AS SHOWN

EOR FIRM:
STANTEC CONSULTING

EOR ADDRESS:
475 5TH AVE 12TH FL.
NEW YORK, NY 10017

PACKAGE NUMBER:
CWDD.21.02



CONTRACT NO.
6240

DATE
DEC. 4, 2019


DRAWING NO.
TRP-09


SHEET 11 OF 23

TRP-11 PLANT SCHEDULE

TREES						
KEY	QTY	BOTANICAL / COMMON NAME		BALL	SIZE	SPACING
CK	18	CORNUS KOUSA / KOUSA DOGWOOD		B&B	25' HT.	8' O.C.
IMDL	13	ILEX X MESERVEAE 'DRAGON LADY' / DRAGON LADY HOLLY		B&B	8'-10' HT.	12' O.C.
IOJD	12	ILEX OPACA 'JERSEY DELIGHT' / JERSEY DELIGHT HOLLY		B&B	8'-10' HT.	12' O.C.
JCA	15	JUNIPERUS CHINENESIS 'ARCTIC' / ARCTIC JUNIPER		B&B/CONT.	8'-10' HT.	4' O.C.
OXF	10	OSMANTHUS X FORTUNEI / FORTUNE'S OSMANTHUS		B&B	48" HT.	12' O.C.
PS	16	PINUS STROBUS / WHITE PINE		B&B	25'-30' HT.	AS SHOWN
QUL	2	QUERCUS LYRATA/OVERCUP OAK		B&B	25'-30' HT.	AS SHOWN
TGG	16	THUJA 'GREEN GIANT' / GREEN GIANT ARBORVITAE		B&B	8'-10' HT.	12' O.C.
SHRUBS						
FGMA	11	FOTHERGILLA GARDENII 'MT. AIRY' / MT. AIRY DWARF FOTHERGILLA		CONT.	30" HT.	3' O.C.
PLS	24	PRUNUS LAUROCERASUS 'SCHIPKAENSIS' / SKIP LAUREL		B&B/CONT.	8' HT.	4' O.C.
VABM	75	VIBURNUM ARROWWOOD 'BLUE MUFFIN' / BLUE MUFFIN VIBURNUM		CONT.	36" HT.	3' O.C.
VRA	8	VIBURNUM XRHYTIDOPHYLLOIDES 'ALLEGHANY' / ALLEGHANY VIBURNUM		B&B/CONT.	48" HT.	4' O.C.

LEGEND

 MINOR TREE

 EVERGREEN TREE

 SHRUB

GARDEN CITY

PROPOSED SOUND AND
RETAINING WALL (TYP)

EXISTING
MAINLINE
TRACKS

LIRR ROW

PROPOSED
THIRD TRACK

CONSTRUCT PLANT PITS FOR
INDIVIDUAL TREES (TYP.)
REFER TO PLANT PIT NOTES SHEET
TRP-06

CONSTRUCT PLANT BED FOR PLANT
INSTALLATION,
PROVIDE TOPSOIL, 4" DEPTH
PROVIDE SHREDDED HARDWOOD BARK
MULCH, 3" DEPTH

NOTES:

1. STA. 234+00 TO STA. 237+00 & STA. 240+00 TO STA. 241+00 PLANTINGS PER AHJ OF GARDEN CITY. REQUEST FOR DIVERSITY AND LAYERING OF PLANT MATERIAL FOR SCREENING.
2. STA. 240 PLANTED PER T.P. 3.11.6.3.4.F.
3. TURF ESTABLISHMENT TO BE PERFORMED WITH HYDRO-SEED PLANTING TECHNIQUE ALONG MAIN AVENUE FROM NASSAU BLVD PLATFORM TO TANNERS POND ROAD.
4. ESTABLISH NEW LAWN WITH TURFGRASS SOD ALONG RETAINING WALL NORTH SIDE OF BRIXTON ROAD TO WHITEHALL.
5. REFER TO PLANT BED / PLANT PIT CONSTRUCTION, AND TURF ESTABLISHMENT NOTES SHEET TRP-06.

RELEASE FOR CONSTRUCTION

DESIGNED BY:
M. KIM
DRAWN BY:
B. HAYES
CHECKED BY:
K. DAHILL
APPROVED BY:
M. BOCAMAZO

MTA

Long Island Rail Road

3rd TRACK CONSTRUCTORS

Picone | DragadosUSA | CCA Civil | Halmar

Stantec

LIRR EXPANSION PROJECT FROM
FLORAL PARK TO HICKSVILLE

IT IS A VIOLATION OF SECTION 2209.2 OF THE NEW YORK STATE EDUCATION LAW FOR ANY PERSON, UNLESS ACTING UNDER THE DIRECTION OF A LICENSED PROFESSIONAL ENGINEER, TO ALTER IN ANY WAY PLANS, SPECIFICATIONS, PLATS OR REPORTS TO WHICH THE SEAL OF A PROFESSIONAL ENGINEER HAS BEEN APPLIED. IF AN ITEM BEARING THE SEAL OF A PROFESSIONAL ENGINEER IS ALTERED THE ALTERING ENGINEER SHALL AFFIX TO THE ITEM HIS SEAL AND THE NOTATION "ALTERED BY" FOLLOWED BY HIS SIGNATURE, THE DATE, AND A SPECIFIC DESCRIPTION OF THE ALTERATION.

CORRIDOR WIDE TREE RESTORATION

LANDSCAPE ARCHITECTURE
TREE RESTORATION PLAN

SCALE:
AS SHOWN
FOR FIRM:
STANTEC CONSULTING
FOR ADDRESS:
475 5TH AVE 12TH FL.
NEW YORK, NY 10017
PACKAGE NUMBER:
CWDD.21.02



CONTRACT NO.
6240
DATE
DEC. 4, 2019
DRAWING NO.
TRP-11
SHEET 13 OF 23